

SMG6 Polyclonal Antibody

(Catalog # A65874)

Background

Component of the telomerase ribonucleoprotein (RNP) complex that is essential for the replication of chromosome termini. May have a general role in telomere regulation. Promotes in vitro the ability of TERT to elongate telomeres. Overexpression induces telomere uncapping, chromosomal end-to-end fusions (telomeric DNA persists at the fusion points) and did not perturb TRF2 telomeric localization. Binds to the single-stranded 5'-(GTGTGG)(4)GTGT-3' telomeric DNA, but not to a telomerase RNA template component (TER).

Description

SMG6 Polyclonal Antibody. Unconjugated. Raised in: Rabbit.

Formulation

Liquid. 0.03% Proclin 300, 50% Glycerol, 0.01M PBS, PH 7.4.

Specificity

Human

Isotype

IgG

Uniprot ID

Q86US8

Purification

>95%, Protein G purified

Immunogen

Recombinant Human Telomerase-binding protein EST1A protein (251-511AA)

Storage

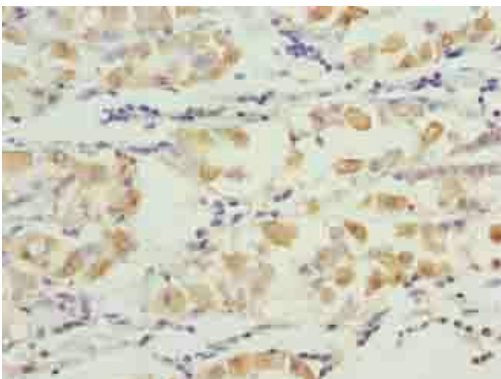
Shipped at 4°C. Upon delivery aliquot and store at -20°C (short-term) or -80°C (long-term). Avoid repeated freeze.

Alternative Names

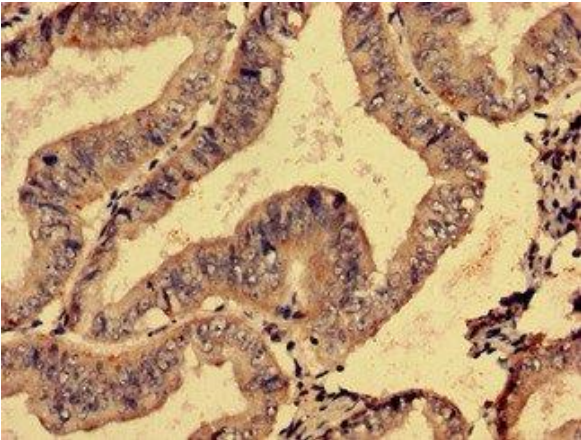
Telomerase-binding protein EST1A, EST1-like protein A, Ever shorter telomeres 1A, Smg-6 homolog, Telomerase subunit EST1A, hSmg5/7a, SMG6, C17orf31, EST1A, KIAA0732

Application

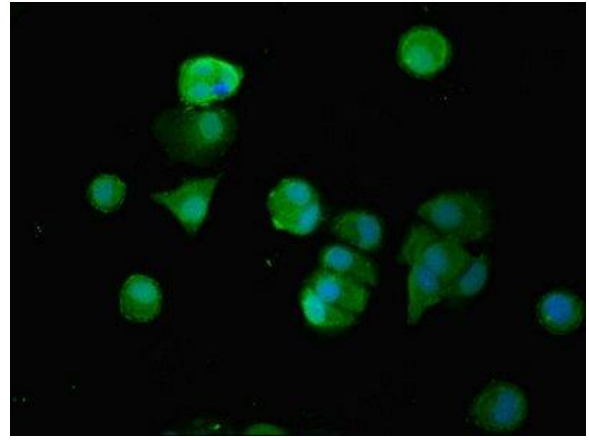
ELISA, IHC, IF; Recommended dilution: IHC:1:20-1:200, IF:1:50-1:200



Immunohistochemistry of paraffin-embedded human gastric cancer using SMG6 Polyclonal Antibody at dilution of 1:100



Immunohistochemistry analysis of human endometrial cancer using SMG6 Polyclonal Antibody at dilution of 1:100



Immunofluorescent analysis of MCF-7 cells using SMG6 Polyclonal Antibody at a dilution of 1:100 and Alexa Fluor 488-conjugated AffiniPure Goat Anti-Rabbit IgG (H+L)