

---

## BTNL3 Polyclonal Antibody

(Catalog #A65718)

---

### Description

BTNL3 Polyclonal Antibody. Unconjugated. Raised in: Rabbit.

### Formulation

Liquid. 0.03% Proclin 300, 50% Glycerol, 0.01M PBS, PH 7.4.

### Specificity

Human

### Isotype

IgG

### Uniprot ID

Q6UXE8

### Purification

>95%, Protein G purified

### Immunogen

Recombinant Human Butyrophilin-like protein 3 protein (18-237AA)

### Storage

Shipped at 4°C. Upon delivery aliquot and store at -20°C (short-term) or -80°C (long-term). Avoid repeated freeze.

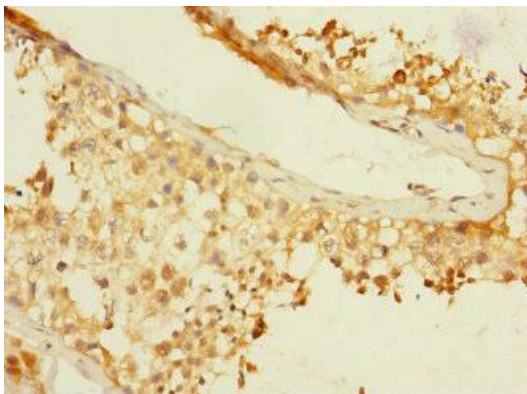
### Alternative Names

Butyrophilin-like protein 3, Butyrophilin-like receptor, BTNL3, BTNLR, COLF4100, UNQ744/PRO1472

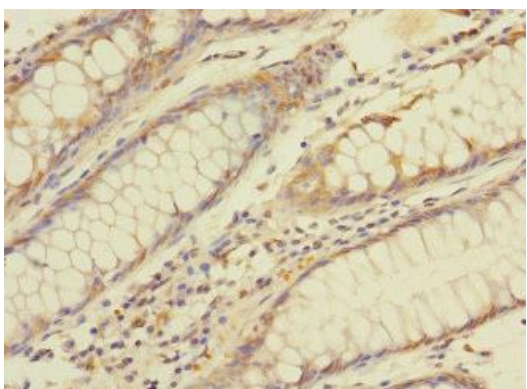
### Application

ELISA, IHC; Recommended dilution: IHC 1:20 - 1:200

---



Immunohistochemistry of paraffin-embedded human testis tissue using BTNL3 Antibody at dilution of 1:100



Immunohistochemistry of paraffin-embedded human colon cancer using BTNL3 Antibody at dilution of 1:100