

KRT80 Polyclonal Antibody

(Catalog # A65642)

Background

KRT80 (Keratin 80) is a protein coding gene. Keratins are intermediate filament proteins responsible for the structural integrity of epithelial cells. They are segmented by epithelial keratins and hair keratins. Keratin 80's expression profile shows that it encodes a type II epithelial keratin. This type of protein is involved in cell differentiation, localizing near desmosomal plaques in earlier stages of differentiation but then dispersing throughout the cytoplasm in terminally differentiating cells. Type II keratins are clustered in a region of chromosome 12q13. Two transcript variants encoding two different fully functional isoforms have been found for this gene. A disease associated with this gene is Cervix Uteri Carcinoma In Situ.

Description

KRT80 Polyclonal Antibody. Unconjugated. Raised in: Rabbit.

Formulation

Liquid. 0.03% Proclin 300, 50% Glycerol, 0.01M PBS, PH 7.4.

Specificity

Human, Mouse

Isotype

IgG

Uniprot ID

Q6KB66

Purification

>95%, Protein G purified

Immunogen

Recombinant Human Keratin, type II cytoskeletal 80 protein (1-300AA)

Storage

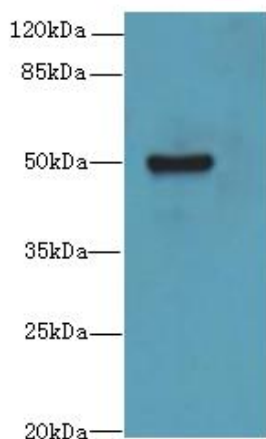
Shipped at 4°C. Upon delivery aliquot and store at -20°C (short-term) or -80°C (long-term). Avoid repeated freeze.

Alternative Names

Keratin, type II cytoskeletal 80, Cytokeratin-80, CK-80, Keratin-80, K80, Type-II keratin Kb20, KRT80, KB20

Application

ELISA, WB, IHC; Recommended dilution: WB:1:1000-1:5000, IHC:1:20-1:200



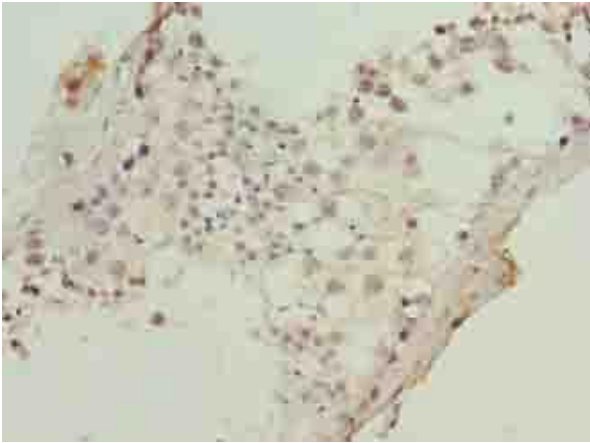
Western blot

All lanes: KRT80 Polyclonal Antibody at 2ug/ml+Mouse brain tissue

Goat polyclonal to rabbit at 1/10000 dilution

Predicted band size: 51 kDa

Observed band size: 51 kDa



Immunohistochemistry of paraffin-embedded human testis tissue using KRT80 Polyclonal Antibody at dilution of 1:100



Immunohistochemistry of paraffin-embedded human skeletal muscle tissue using KRT80 Polyclonal Antibody at dilution of 1:100