

TUBA3E Polyclonal Antibody

(Catalog # A65582)

Background

Tubulin is the major constituent of microtubules. It binds two moles of GTP, one at an exchangeable site on the beta chain and one at a non-exchangeable site on the alpha chain.

Description

TUBA3E Polyclonal Antibody. Unconjugated. Raised in: Rabbit.

Formulation

Liquid. 0.03% Proclin 300, 50% Glycerol, 0.01M PBS, PH 7.4.

Specificity

Human

Isotype

IgG

Uniprot ID

Q6PEY2

Purification

>95%, Protein G purified

Immunogen

Recombinant Human Tubulin alpha-3E chain protein (1-250AA)

Storage

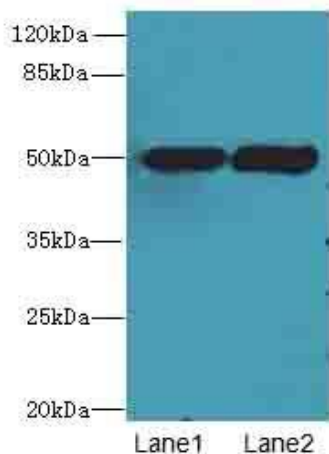
Shipped at 4°C. Upon delivery aliquot and store at -20°C (short-term) or -80°C (long-term). Avoid repeated freeze.

Alternative Names

Tubulin alpha-3E chain, Alpha-tubulin 3E, TUBA3E

Application

ELISA, WB, IHC; Recommended dilution: WB:1:1000-1:5000, IHC:1:20-1:200



Western blot

All Lanes: TUBA3E Polyclonal Antibody at 3ug/ml

Lane 1: MCF7 whole cell lysate

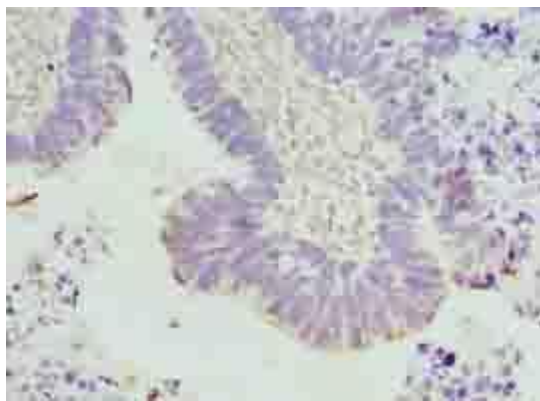
Lane 2: Hela whole cell lysate

Secondary

Goat polyclonal to Rabbit IgG at 1/10000 dilution

Predicted band size: 50 kDa

Observed band size: 50 kDa



Immunohistochemistry of paraffin-embedded human ovarian cancer using TUBA3E Polyclonal Antibody at dilution of 1:100