

# PYHIN1 Polyclonal Antibody

(Catalog #A65466)

## Background

Major mediator of the tumor suppressor activity of IFN in breast cancer cells. Promotes ubiquitination and subsequent degradation of MDM2, which leads to p53/TP53 stabilization. Promotes ubiquitination and subsequent degradation of HDAC1, which in turn enhances maspin expression, and impairs invasive activity of cancer cells.

## Description

PYHIN1 Polyclonal Antibody. Unconjugated. Raised in: Rabbit.

## Formulation

Liquid. 0.03% Proclin 300, 50% Glycerol, 0.01M PBS, PH 7.4.

## Specificity

Human, Mouse

## Isotype

IgG

## Uniprot ID

Q6K0P9

## Purification

>95%, Protein G purified

## Immunogen

Recombinant Human Pysin and HIN domain-containing protein 1 protein (1-245AA)

## Storage

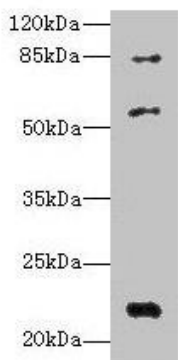
Shipped at 4°C. Upon delivery aliquot and store at -20°C (short-term) or -80°C (long-term). Avoid repeated freeze.

## Alternative Names

Pysin and HIN domain-containing protein 1, Interferon-inducible protein X, PYHIN1, IFIX

## Application

ELISA, WB; Recommended dilution: WB:1:1000-1:5000



## Western blot

All lanes: PYHIN1 Polyclonal Antibody at 6µg/ml +  
Mouse small intestine tissue  
Secondary  
Goat polyclonal to rabbit IgG at 1/10000 dilution  
Predicted band size: 56, 55, 52, 51, 27, 26 kDa  
Observed band size: 56, 22, 84 kDa