

GLT8D1 Polyclonal Antibody

(Catalog # A65170)

Background

Golgi apparatus, membrane, transferase activity, transferring glycosyl groups, polysaccharide biosynthetic process

Description

GLT8D1 Polyclonal Antibody. Unconjugated. Raised in: Rabbit.

Formulation

0.03% Proclin 300, 50% Glycerol, 0.01M PBS, PH 7.4.

Specificity

Human, Mouse

Isotype

IgG

Uniprot ID

Q68CQ7

Purification

Protein G purified

Immunogen

Recombinant Human Glycosyltransferase 8 domain-containing protein 1 protein (33-332AA)

Storage

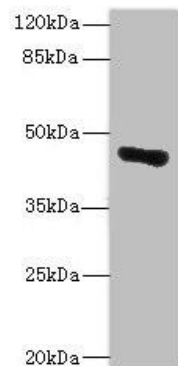
Shipped at 4°C. Upon delivery aliquot and store at -20°C (short-term) or -80°C (long-term). Avoid repeated freeze.

Alternative Names

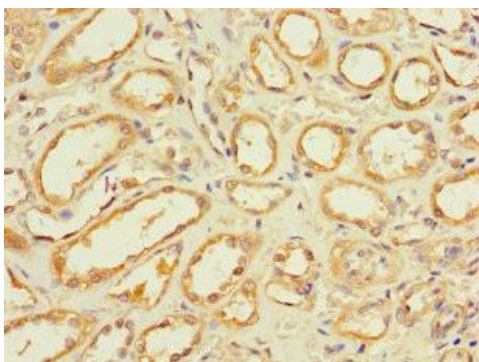
Glycosyltransferase 8 domain-containing protein 1, GLT8D1, GALA4A, AD-017, MSTP137, UNQ572/PRO1134

Application

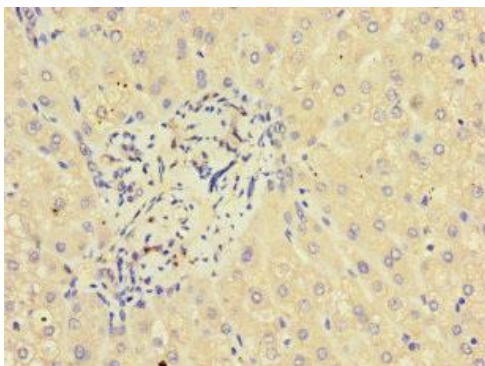
ELISA, WB, IHC, IF; Recommended dilution: WB:1:500-1:2000, IHC:1:20-1:200, IF:1:50-1:200



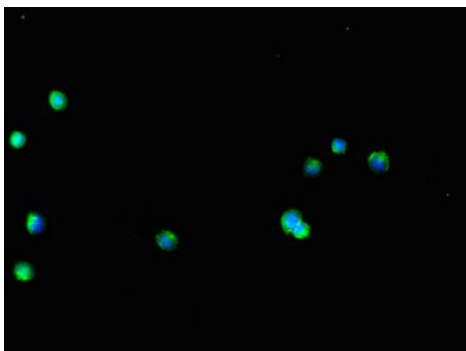
Western blot
All lanes: GLT8D1 Polyclonal Antibody IgG at 10ug/ml+ Mouse liver tissue
Secondary
Goat polyclonal to rabbit IgG at 1/10000 dilution
Predicted band size: 42, 29 kDa
Observed band size: 42 kDa



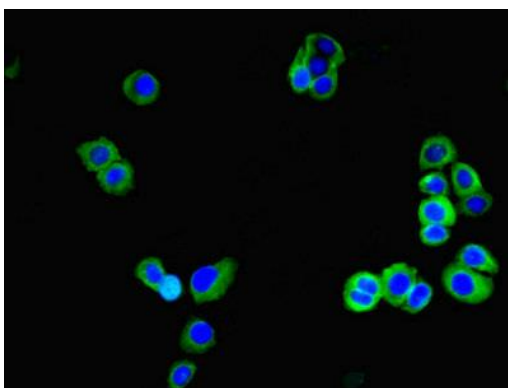
Immunohistochemistry of paraffin-embedded human kidney tissue using GLT8D1 Polyclonal Antibody at dilution of 1:100



Immunohistochemistry of paraffin-embedded human liver tissue using GLT8D1 Polyclonal Antibody at dilution of 1:100



Immunofluorescent analysis of HepG2 cells using GLT8D1 Polyclonal Antibody at a dilution of 1:100 and Alexa Fluor 488-conjugated AffiniPure Goat Anti-Rabbit IgG (H+L)



Immunofluorescent analysis of PC3 cells using GLT8D1 Polyclonal Antibody at a dilution of 1:100 and Alexa Fluor 488-conjugated AffiniPure Goat Anti-Rabbit IgG (H+L)