

SYTL3 Polyclonal Antibody

(Catalog # A65070)

Background

May act as Rab effector protein and play a role in vesicle trafficking. Binds phospholipids in the presence of calcium ions.

Description

SYTL3 Polyclonal Antibody. Unconjugated. Raised in: Rabbit.

Formulation

Liquid. 0.03% Proclin 300, 50% Glycerol, 0.01M PBS, PH 7.4.

Specificity

Human

Isotype

IgG

Uniprot ID

Q4VX76

Purification

>95%, Protein G purified

Immunogen

Recombinant Human Synaptotagmin-like protein 3 protein (1-300AA)

Storage

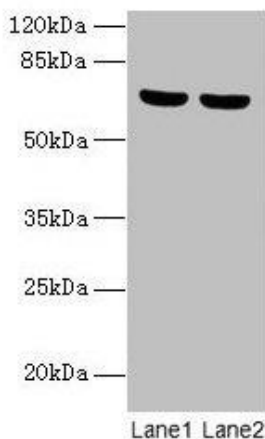
Shipped at 4°C. Upon delivery aliquot and store at -20°C (short-term) or -80°C (long-term). Avoid repeated freeze.

Alternative Names

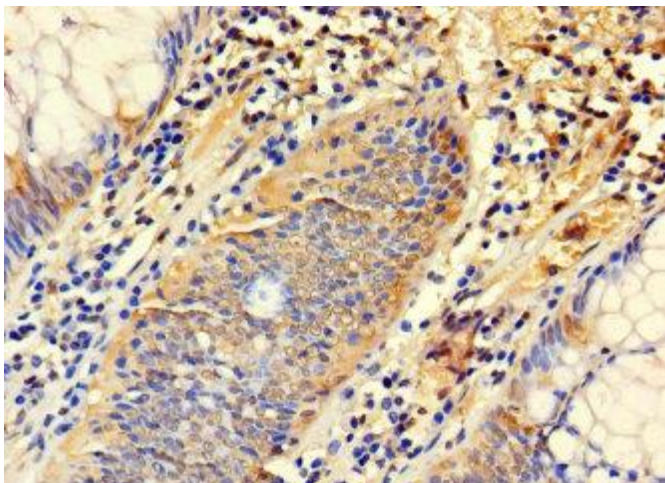
Synaptotagmin-like protein 3, Exophilin-6, SYTL3, SLP3

Application

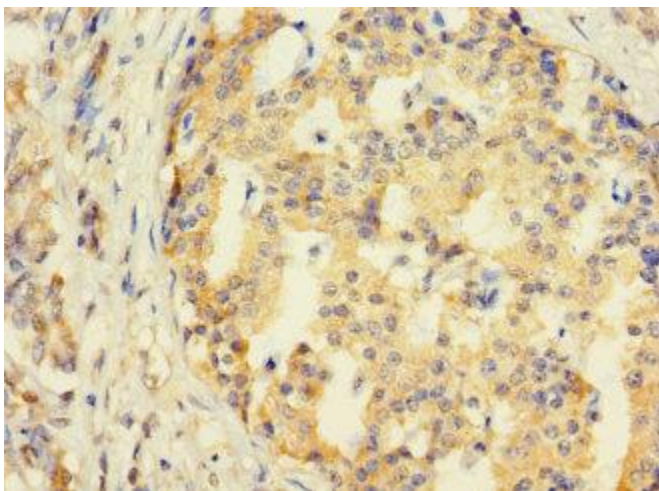
ELISA, WB, IHC; Recommended dilution: WB:1:1000-1:5000, IHC:1:20-1:200



Western blot
All lanes: SYTL3 Polyclonal Antibody at 5µg/ml
Lane 1: A549 whole cell lysate
Lane 2: THP-1 whole cell lysate
Secondary
Goat polyclonal to rabbit IgG at 1/10000 dilution
Predicted band size: 69, 61 kDa
Observed band size: 69 kDa



Immunohistochemistry of paraffin-embedded human colon cancer using SYTL3 Polyclonal Antibody at dilution 1:100



Immunohistochemistry of paraffin-embedded human pancreatic cancer using SYTL3 Polyclonal Antibody at dilution 1:100