

## SGCA Polyclonal Antibody

(Catalog # A64830)

### Background

Component of the sarcoglycan complex, a subcomplex of the dystrophin-glycoprotein complex which forms a link between the F-actin cytoskeleton and the extracellular matrix.

### Description

SGCA Polyclonal Antibody. Unconjugated. Raised in: Rabbit.

### Formulation

0.03% Proclin 300. 50% Glycerol, 0.01M PBS, pH 7.4.

### Specificity

Human

### Isotype

IgG

### Uniprot ID

Q16586

### Purification

Affinity Purified

### Immunogen

Recombinant Human Alpha-sarcoglycan protein (24-290AA)

### Storage

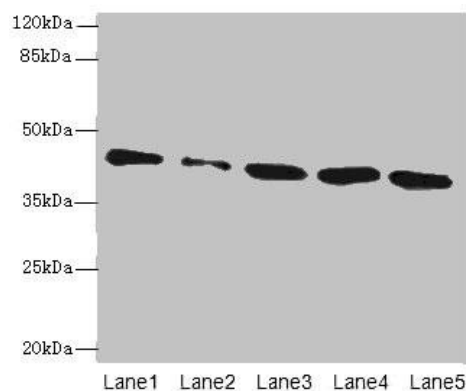
Shipped at 4°C. Upon delivery aliquot and store at -20°C (short-term) or -80°C (long-term). Avoid repeated freeze.

### Alternative Names

Alpha-sarcoglycan, Alpha-SG, 50 kDa dystrophin-associated glycoprotein, 50DAG, Adhalin, Dystroglycan-2, SGCA, ADL, DAG2

### Application

ELISA, WB, IHC, IF; Recommended dilution: WB:1:500-1:2000, IHC:1:20-1:200, IF:1:50-1:200



#### Western blot

All lanes: SGCA Polyclonal Antibody at 0.5ug/ml

Lane 1: Jurkat whole cell lysate

Lane 2: HepG-2 whole cell lysate

Lane 3: Hela whole cell lysate

Lane 4: 293T whole cell lysate

Lane 5: MCF7 whole cell lysate

Secondary

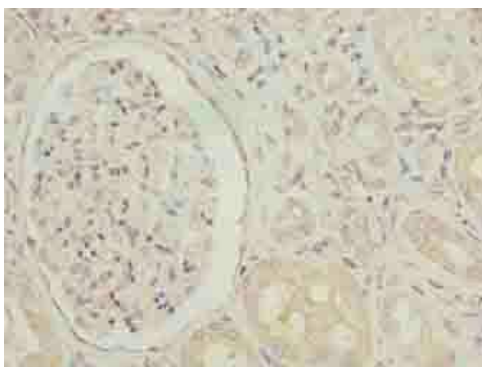
Goat polyclonal to Rabbit IgG at 1/10000 dilution

Predicted band size: 43, 30 kDa

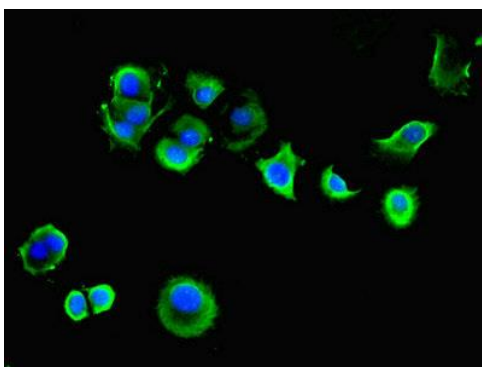
Observed band size: 43 kDa



Immunohistochemistry of paraffin-embedded human kidney tissue using SGCA Polyclonal Antibody at dilution of 1:100



Immunohistochemistry of paraffin-embedded human skeletal muscle tissue using SGCA Polyclonal Antibody at dilution of 1:100



Immunofluorescent analysis of MCF-7 cells using SGCA Polyclonal Antibody at a dilution of 1:100 and Alexa Fluor 488-conjugated AffiniPure Goat Anti-Rabbit IgG (H+L)