
KLF1 Polyclonal Antibody

(Catalog #A64762)

Background

Transcription regulator of erythrocyte development that probably serves as a general switch factor during erythropoiesis. Is a dual regulator of fetal-to-adult globin switching. Binds to the CACCC box in the beta-globin gene promoter and acts as a preferential activator of this gene. Furthermore, it binds to the BCL11A promoter and activates expression of BCL11A, which in turn represses the HBG1 and HBG2 genes. This dual activity ensures that, in most adults, fetal hemoglobin levels are low. Able to activate CD44 and AQP1 promoters. When sumoylated, acts as a transcriptional repressor by promoting interaction with CDH2/MI2beta and also represses megakaryocytic differentiation.

Description

KLF1 Polyclonal Antibody. Unconjugated. Raised in: Rabbit.

Formulation

Liquid. 0.03% Proclin 300, 50% Glycerol, 0.01M PBS, PH 7.4.

Specificity

Human

Isotype

IgG

Uniprot ID

Q13351

Purification

>95%, Protein G purified

Immunogen

Recombinant Human Krueppel-like factor 1 protein (1-362AA)

Storage

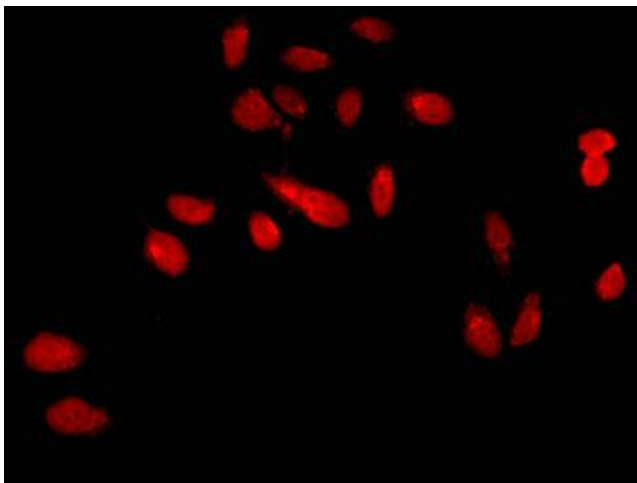
Shipped at 4°C. Upon delivery aliquot and store at -20°C (short-term) or -80°C (long-term). Avoid repeated freeze.

Alternative Names

Krueppel-like factor 1, Erythroid krueppel-like transcription factor, EKLF, KLF1, EKLF

Application

ELISA, IF; Recommended dilution: IF 1:50 - 1:200



Immunofluorescent analysis of HeLa cells using KLF1 Polyclonal Antibody at dilution of 1:100 and Cy3-conjugated Goat Anti-Rabbit IgG