

SLC5A2 Polyclonal Antibody

(Catalog # A63450)

Background

Sodium-dependent glucose transporter. Has a Na(+) to glucose coupling ratio of 1:1.

Description

SLC5A2 Polyclonal Antibody. Unconjugated. Raised in: Rabbit.

Formulation

Liquid. 0.03% Proclin 300, 50% Glycerol, 0.01M PBS, PH 7.4.

Specificity

Human

Isotype

IgG

Uniprot ID

P31639

Purification

>95%, Protein G purified

Immunogen

Recombinant Human Sodium/glucose cotransporter 2 protein (335-422AA)

Storage

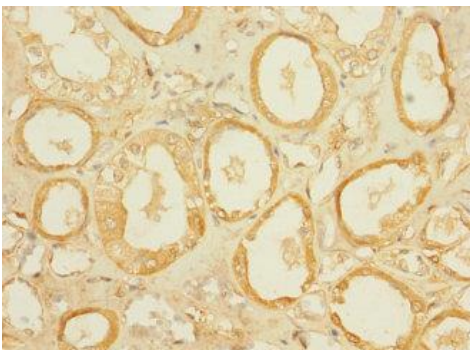
Shipped at 4°C. Upon delivery aliquot and store at -20°C (short-term) or -80°C (long-term). Avoid repeated freeze.

Alternative Names

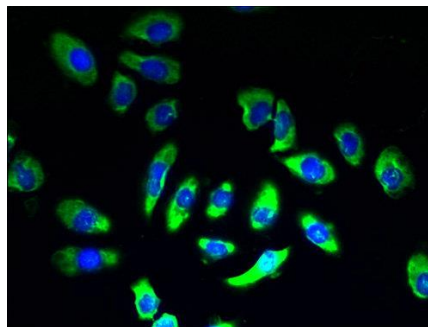
Sodium/glucose cotransporter 2, Na(+)/glucose cotransporter 2, Low affinity sodium-glucose cotransporter, Solute carrier family 5 member 2, SLC5A2, SGLT2

Application

ELISA, IHC, IF; Recommended dilution: IHC:1:20-1:200, IF:1:50-1:200



Immunohistochemistry of paraffin-embedded human kidney tissue at dilution 1:100



Immunofluorescent analysis of A549 cells at a dilution of 1:100 and Alexa Fluor 488-conjugated AffiniPure Goat Anti-Rabbit IgG(H+L)