

## HEPACAM2 Polyclonal Antibody

(Catalog #A62730)

### Background

Required during prometaphase for centrosome maturation. Following poly-ADP-ribosylation (PARsylation) by TNKS, translocates from the Golgi apparatus to mitotic centrosomes and plays a key role in the formation of robust microtubules for prompt movement of chromosomes: anchors AKAP9/CG-NAP, a scaffold protein of the gamma-tubulin ring complex and promotes centrosome maturation.

### Description

HEPACAM2 Polyclonal Antibody. Unconjugated. Raised in: Rabbit.

### Formulation

Liquid. 0.03% Proclin 300, 50% Glycerol, 0.01M PBS, PH 7.4.

### Specificity

Human

### Isotype

IgG

### Uniprot ID

A8MVW5

### Purification

>95%, Protein G purified

### Immunogen

Recombinant Human HEPACAM family member 2 protein (32-351AA)

### Storage

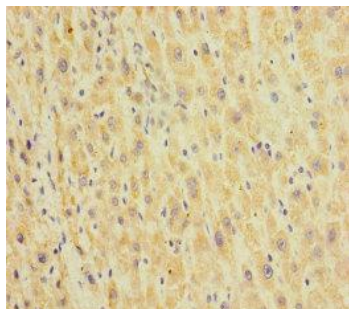
Shipped at 4°C. Upon delivery aliquot and store at -20°C (short-term) or -80°C (long-term). Avoid repeated freeze.

### Alternative Names

HEPACAM family member 2, Mitotic kinetics regulator, HEPACAM2, MIKI, UNQ305/PRO346

### Application

ELISA, IHC; Recommended dilution: IHC:1:20 - 1:200



Immunohistochemistry of paraffin-embedded human liver cancer at dilution of 1:100