

## CLEC3A Polyclonal Antibody

(Catalog # A62286)

### Background

Promotes cell adhesion to laminin-332 and fibronectin.

### Description

CLEC3A Polyclonal Antibody. Unconjugated. Raised in: Rabbit.

### Formulation

0.03% Proclin 300. 50% Glycerol, 0.01M PBS, pH 7.4.

### Specificity

Human, Mouse

### Isotype

IgG

### Uniprot ID

O75596

### Purification

Affinity Purified

### Immunogen

Recombinant Human C-type lectin domain family 3 member A protein (23-197AA)

### Storage

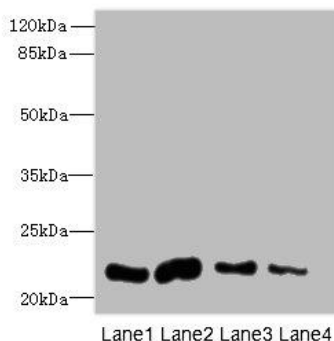
Shipped at 4°C. Upon delivery aliquot and store at -20°C (short-term) or -80°C (long-term). Avoid repeated freeze.

### Alternative Names

C-type lectin domain family 3 member A, C-type lectin superfamily member 1, Cartilage-derived C-type lectin, CLEC3A, CLECSF1, UNQ700/PRO1345

### Application

ELISA, WB, IHC; Recommended dilution: WB:1:500-1:5000, IHC:1:20-1:200



#### Western blot

All lanes: CLEC3A Polyclonal Antibody at 0.4ug/ml

Lane 1: Mouse liver tissue

Lane 2: Mouse kidney tissue

Lane 3: Mouse brain tissue

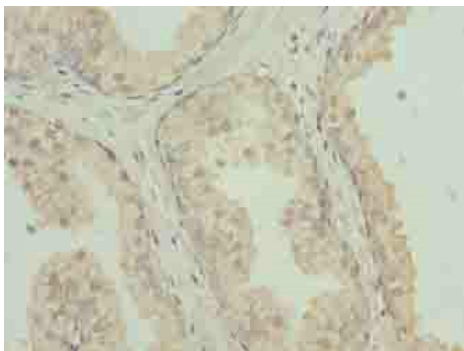
Lane 4: Mouse lung tissue

Secondary

Goat polyclonal to Rabbit IgG at 1/10000 dilution

Predicted band size: 22 kDa

Observed band size: 22 kDa



Immunohistochemistry of paraffin-embedded human prostate cancer at dilution of 1:100