
ERCC6L2 Polyclonal Antibody

(Catalog #A62190)

Background

ERCC6L2 (ERCC Excision Repair 6 Like 2) encodes a member of the Snf2 family of helicase-like proteins. The encoded protein may play a role in DNA repair and mitochondrial function. Diseases associated with ERCC6L2 include Bone Marrow Failure Syndrome 2 and Microcephaly. Gene Ontology (GO) annotations related to this gene include nucleic acid binding and ATP-dependent helicase activity. An important paralog of this gene is RAD54B.

Description

ERCC6L2 Polyclonal Antibody. Unconjugated. Raised in: Rabbit.

Formulation

Liquid. 0.03% Proclin 300, 50% Glycerol, 0.01M PBS, PH 7.4.

Specificity

Human

Isotype

IgG

Uniprot ID

Q5T890

Purification

>95%, Protein G purified

Immunogen

Recombinant Human DNA excision repair protein ERCC-6-like 2 protein (72-371AA)

Storage

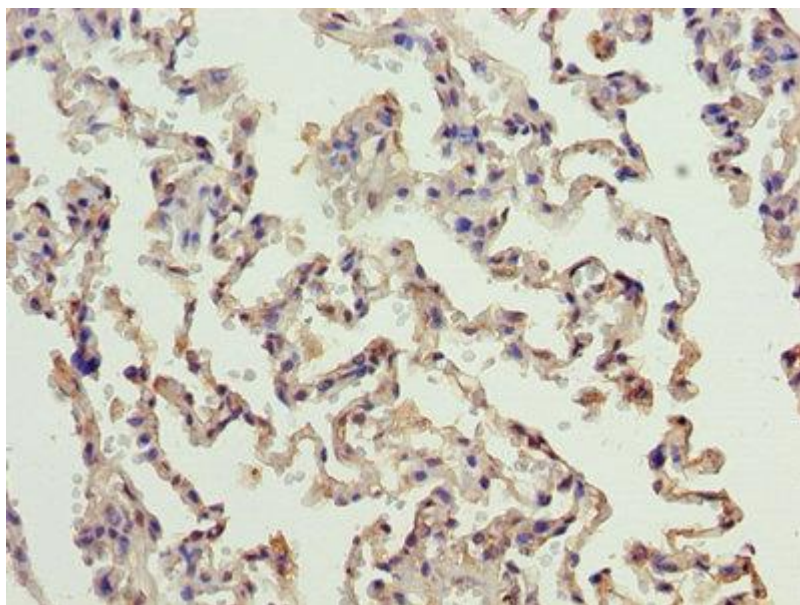
Shipped at 4°C. Upon delivery aliquot and store at -20°C (short-term) or -80°C (long-term). Avoid repeated freeze.

Alternative Names

DNA excision repair protein ERCC-6-like 2, DNA repair and recombination protein RAD26-like, ERCC6L2, C9orf102, RAD26L

Application

ELISA, IHC; Recommended dilution: IHC:1:20-1:200



Immunohistochemistry of paraffin-embedded human lung tissue using ERCC6L2 Polyclonal Antibody at dilution of 1:100