

## STK38L Polyclonal Antibody

(Catalog # A61190)

### Background

Involved in the regulation of structural processes in differentiating and mature neuronal cells.

### Description

STK38L Polyclonal Antibody. Unconjugated. Raised in: Rabbit.

### Formulation

0.03% Proclin 300. 50% Glycerol, 0.01M PBS, pH 7.4.

### Specificity

Human

### Isotype

IgG

### Uniprot ID

Q9Y2H1

### Purification

Protein G purified

### Immunogen

Recombinant Human Serine/threonine-protein kinase 38-like protein (212-464AA)

### Storage

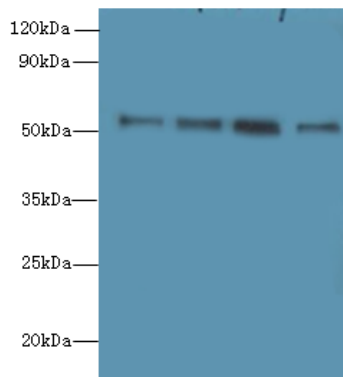
Shipped at 4°C. Upon delivery aliquot and store at -20°C (short-term) or -80°C (long-term). Avoid repeated freeze.

### Alternative Names

Serine/threonine-protein kinase 38-like (EC:2.7.11.1), STK38L, NDR2 protein kinase, Nuclear Dbf2-related kinase 2

### Application

ELISA, WB, IHC; Recommended dilution: WB:1:500-1:2000, IHC:1:20-1:200



#### Western blot

All Lanes: STK38L Polyclonal Antibody at 6ug/ml

Lane 1: A375 whole cell lysate

Lane 2: HepG-2 whole cell lysate

Lane 3: A549 whole cell lysate

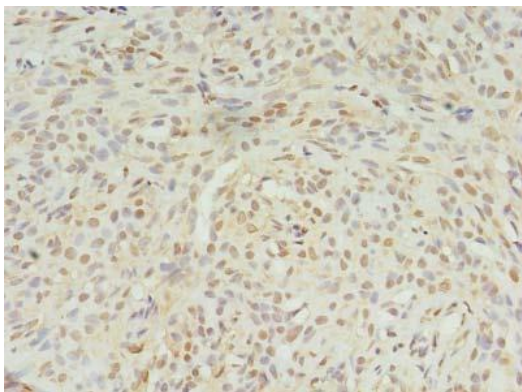
Lane 4: HCT116 whole cell lysate

Secondary

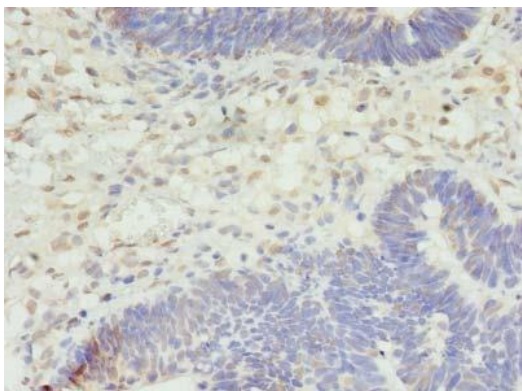
Goat polyclonal to Rabbit IgG at 1/10000 dilution

Predicted band size: 54 kDa

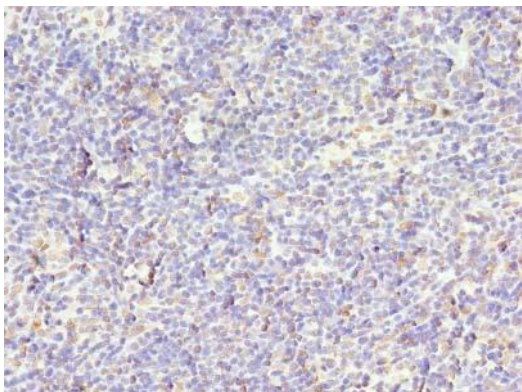
Observed band size: 54 kDa



Immunohistochemistry of paraffin-embedded human breast cancer using STK38L Polyclonal Antibody at dilution of 1:100



Immunohistochemistry of paraffin-embedded human ovarian cancer using STK38L Polyclonal Antibody at dilution of 1:100



Immunohistochemistry of paraffin-embedded human thymus using STK38L Polyclonal Antibody at dilution of 1:100