

## SPRY1 Polyclonal Antibody

(Catalog # A61138)

### Background

May function as an antagonist of fibroblast growth factor (FGF) pathways and may negatively modulate respiratory organogenesis.

### Description

SPRY1 Polyclonal Antibody. Unconjugated. Raised in: Rabbit.

### Formulation

0.03% Proclin 300, 50% Glycerol, 0.01M PBS, PH 7.4.

### Specificity

Human, Mouse

### Isotype

IgG

### Uniprot ID

O43609

### Purification

Protein G purified

### Immunogen

Recombinant Human Protein sprouty homolog 1 protein (1-178AA)

### Storage

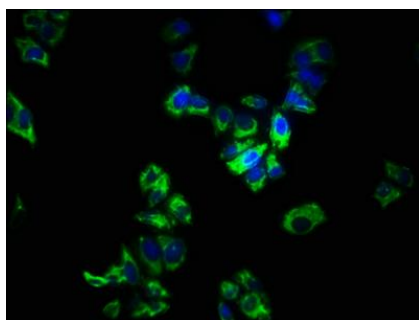
Shipped at 4°C. Upon delivery aliquot and store at -20°C (short-term) or -80°C (long-term). Avoid repeated freeze.

### Alternative Names

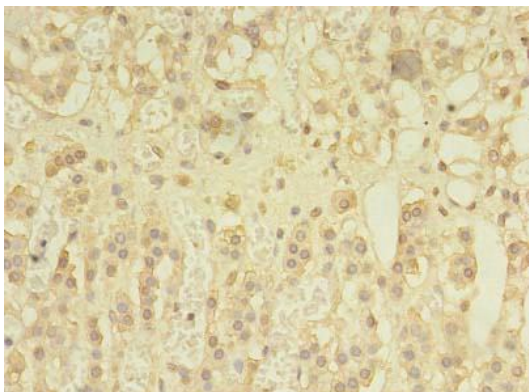
Protein sprouty homolog 1, Spry-1, SPRY1

### Application

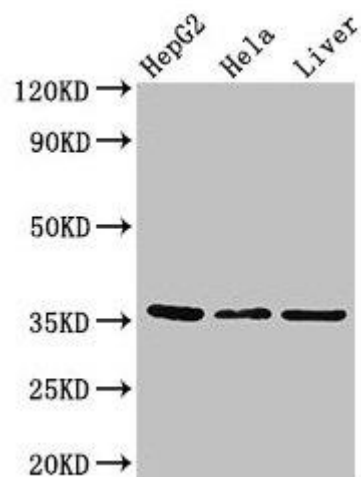
ELISA, WB, IHC, IF; Recommended dilution: WB:1:500-1:5000, IHC:1:20-1:200, IF:1:200-1:500



Immunofluorescence staining of PC-3 cells with SPRY1 Antibody at 1:266, counter-stained with DAPI. The cells were fixed in 4% formaldehyde, permeabilized using 0.2% Triton X-100 and blocked in 10% normal Goat Serum. The cells were then incubated with the antibody overnight at 4°C. The secondary antibody was Alexa Fluor 488-conjugated AffiniPure Goat Anti-Rabbit IgG(H+L).



Immunohistochemistry of paraffin-embedded human adrenal gland tissue using SPRY1 Antibody at dilution of 1:100



#### Western Blot

Positive WB detected in: HepG2 whole cell lysate, HeLa whole cell lysate, Mouse liver tissue

All lanes: SPRY1 antibody at 2.7ug/ml

Secondary

Goat polyclonal to rabbit IgG at 1/50000 dilution

Predicted band size: 36 kDa

Observed band size: 36 kDa