
SLC38A5 Polyclonal Antibody

(Catalog #A60998)

Background

Functions as a sodium-dependent amino acid transporter which countertransport protons. Mediates the saturable, pH-sensitive, and electrogenic cotransport of several neutral amino acids including glycine, asparagine, alanine, serine, glutamine and histidine with sodium.

Description

SLC38A5 Polyclonal Antibody. Unconjugated. Raised in: Rabbit.

Formulation

Liquid. 0.03% Proclin 300, 50% Glycerol, 0.01M PBS, PH 7.4.

Specificity

Human

Isotype

IgG

Uniprot ID

Q8WUX1

Purification

>95%, Protein G purified

Immunogen

Recombinant Human Sodium-coupled neutral amino acid transporter 5 protein (1-48AA)

Storage

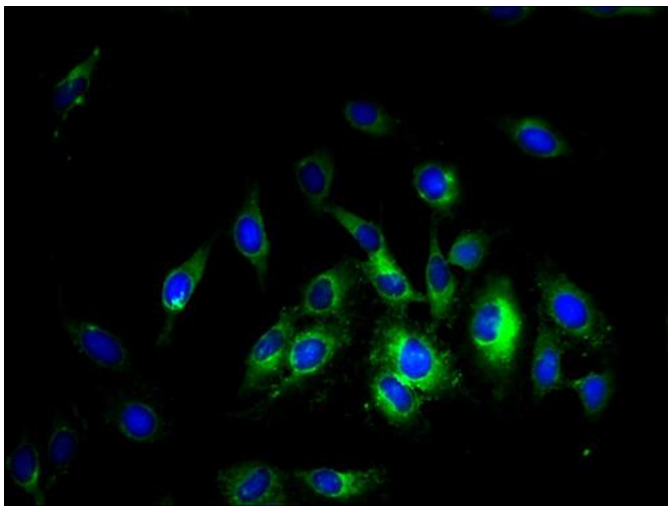
Shipped at 4°C. Upon delivery aliquot and store at -20°C (short-term) or -80°C (long-term). Avoid repeated freeze.

Alternative Names

Sodium-coupled neutral amino acid transporter 5, SLC38A5, JM24, SN2, SNAT5, PP7194, Solute carrier family 38 member 5, System N transporter 2

Application

ELISA, IF; Recommended dilution: IF:1:50-1:200



Immunofluorescent analysis of HeLa cells using SLC38A5 Polyclonal Antibody at a dilution of 1:100 and Alexa Fluor 488-conjugated AffiniPure Goat Anti-Rabbit IgG(H+L)