

SLC25A51 Polyclonal Antibody

(Catalog # A60974)

Description

SLC25A51 Polyclonal Antibody. Unconjugated. Raised in: Rabbit.

Formulation

Liquid. 0.03% Proclin 300, 50% Glycerol, 0.01M PBS, PH 7.4.

Specificity

Human, Mouse

Isotype

IgG

Uniprot ID

Q9H1U9

Purification

>95%, Protein G purified

Immunogen

Recombinant Human Solute carrier family 25 member 51 protein (1-35AA)

Storage

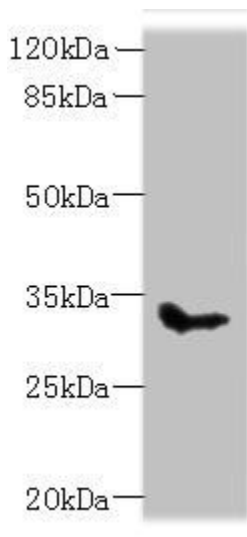
Shipped at 4°C. Upon delivery aliquot and store at -20°C (short-term) or -80°C (long-term). Avoid repeated freeze.

Alternative Names

Solute carrier family 25 member 51, SLC25A51, MCART1, Mitochondrial carrier triple repeat protein 1

Application

ELISA, WB, IF; Recommended dilution: WB:1:1000-1:5000, IF:1:50-1:200



Western blot

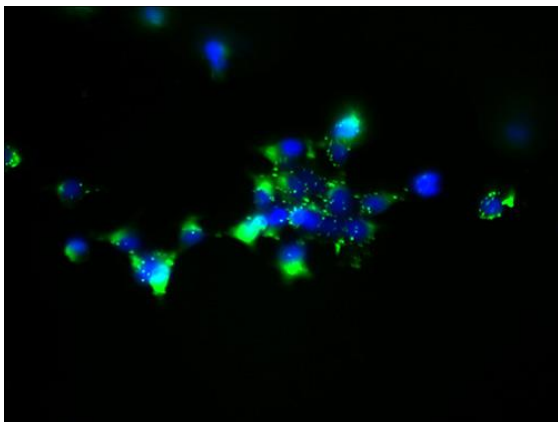
All lanes: SLC25A51 Polyclonal Antibody at 8µg/ml + Mouse kidney tissue

Secondary

Goat polyclonal to rabbit IgG at 1/10000 dilution

Predicted band size: 34 kDa

Observed band size: 34 kDa



Immunofluorescent analysis of 293 cells using SLC25A51 Polyclonal Antibody at a dilution of 1:100 and Alexa Fluor 488-conjugated AffiniPure Goat Anti-Rabbit IgG(H+L)