

SLC12A9 Polyclonal Antibody

(Catalog # A60922)

Background

May be an inhibitor of SLC12A1. Seems to correspond to a subunit of a multimeric transport system and thus, additional subunits may be required for its function.

Description

SLC12A9 Polyclonal Antibody. Unconjugated. Raised in: Rabbit.

Formulation

Liquid. 0.03% Proclin 300, 50% Glycerol, 0.01M PBS, PH 7.4.

Specificity

Human

Isotype

IgG

Uniprot ID

Q9BXP2

Purification

>95%, Protein G purified

Immunogen

Recombinant Human Solute carrier family 12 member 9 protein (126-173AA)

Storage

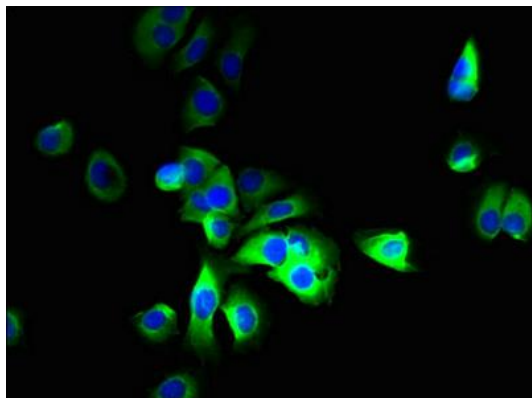
Shipped at 4°C. Upon delivery aliquot and store at -20°C (short-term) or -80°C (long-term). Avoid repeated freeze.

Alternative Names

Solute carrier family 12 member 9, SLC12A9, CCC6, CIP1, Cation-chloride cotransporter 6, hCCC6, Cation-chloride cotransporter-interacting protein 1, CCC-interacting protein 1, hCIP1, Potassium-chloride transporter 9, WO3.3

Application

ELISA, IF; Recommended dilution: IF:1:50-1:200



Immunofluorescent analysis of MCF-7 cells using SLC12A9 Antibody at dilution of 1:100 and Alexa Fluor 488-conjugated AffiniPure Goat Anti-Rabbit IgG(H+L)