

SEC61G Polyclonal Antibody

(Catalog #A60846)

Background

Necessary for protein translocation in the endoplasmic reticulum.

Description

SEC61G Polyclonal Antibody. Unconjugated. Raised in: Rabbit.

Formulation

0.03% Proclin 300. 50% Glycerol, 0.01M PBS, pH 7.4.

Specificity

Human

Isotype

IgG

Uniprot ID

P60059

Purification

Affinity Purified

Immunogen

Recombinant Human Protein transport protein Sec61 subunit gamma protein (1-32AA)

Storage

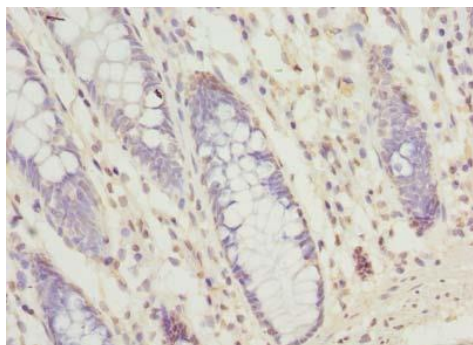
Shipped at 4°C. Upon delivery aliquot and store at -20°C (short-term) or -80°C (long-term). Avoid repeated freeze.

Alternative Names

Protein transport protein Sec61 subunit gamma, SEC61G

Application

ELISA, IHC; Recommended dilution: IHC:1:20-1:200



Immunohistochemistry of paraffin-embedded human colon cancer using SEC61G Polyclonal Antibody at dilution of 1:100