

PI3 Polyclonal Antibody

(Catalog # A60258)

Background

Neutrophil and pancreatic elastase-specific inhibitor of skin. It may prevent elastase-mediated tissue proteolysis.

Description

PI3 Polyclonal Antibody. Unconjugated. Raised in: Rabbit.

Formulation

Liquid. 0.03% Proclin 300, 50% Glycerol, 0.01M PBS, PH 7.4.

Specificity

Human

Isotype

IgG

Uniprot ID

P19957

Purification

>95%, Protein G purified

Immunogen

Recombinant Human Elafin protein (61-117AA)

Storage

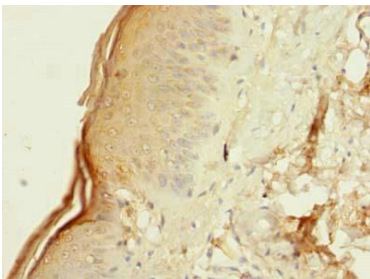
Shipped at 4°C. Upon delivery aliquot and store at -20°C (short-term) or -80°C (long-term). Avoid repeated freeze.

Alternative Names

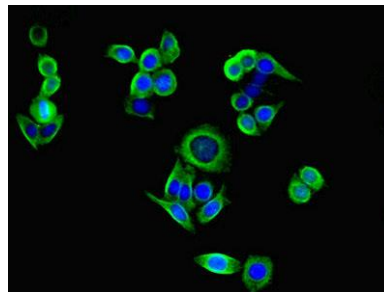
Elafin, PI3, WAP3, WFDC14, Elastase-specific inhibitor, ESI, Peptidase inhibitor 3, PI-3, Protease inhibitor WAP3, Skin-derived antileukoproteinase, SKALP, WAP four-disulfide core domain protein 14

Application

ELISA, IHC, IF; Recommended dilution: IHC:1:20-1:200, IF:1:50-1:200



Immunohistochemistry of paraffin-embedded human skin tissue using PI3 Polyclonal Antibody at dilution of 1:100



Immunofluorescent analysis of PC3 cells using PI3 Polyclonal Antibody at a dilution of 1:100 and Alexa Fluor 488-conjugated AffiniPure Goat Anti-Rabbit IgG (H+L)