

---

## MS4A7 Polyclonal Antibody

(Catalog #A59930)

---

### Background

May be involved in signal transduction as a component of a multimeric receptor complex.

### Description

MS4A7 Polyclonal Antibody. Unconjugated. Raised in: Rabbit.

### Formulation

Liquid. 0.03% Proclin 300, 50% Glycerol, 0.01M PBS, PH 7.4.

### Specificity

Human

### Isotype

IgG

### Uniprot ID

Q9GZW8

### Purification

>95%, Protein G purified

### Immunogen

Recombinant Human Membrane-spanning 4-domains subfamily A member 7 protein (1-47AA)

### Storage

Shipped at 4°C. Upon delivery aliquot and store at -20°C (short-term) or -80°C (long-term). Avoid repeated freeze.

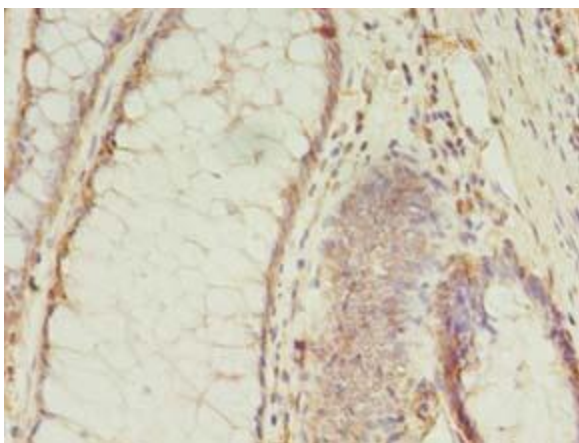
### Alternative Names

Membrane-spanning 4-domains subfamily A member 7, MS4A7, 4SPAN2, CD20L4, CFFM4, CD20 antigen-like 4, CD20/FC-epsilon-RI-beta family member 4, Four-span transmembrane protein 2

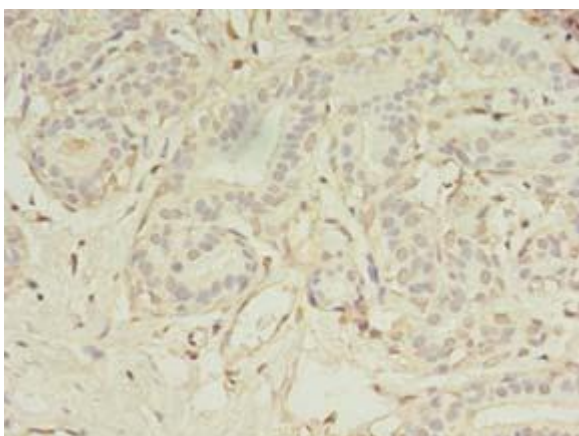
### Application

ELISA, IHC, IF; Recommended dilution: IHC:1:20-1:200, IF:1:50-1:200

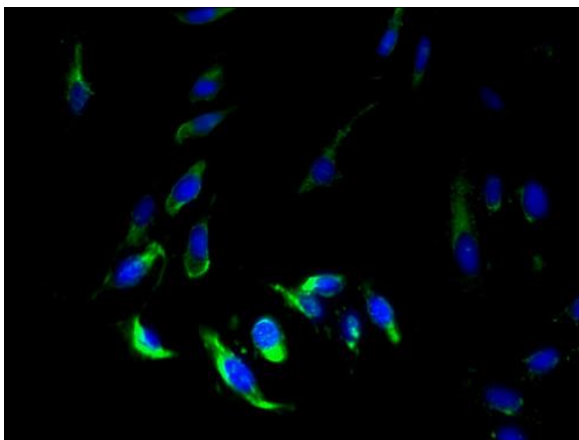
---



Immunohistochemistry of paraffin-embedded human colon cancer using MS4A7 Polyclonal Antibody at dilution 1:100



Immunohistochemistry of paraffin-embedded human breast cancer using MS4A7 Polyclonal Antibody at dilution 1:100



Immunofluorescent analysis of Hela cells using MS4A7 Polyclonal Antibody at a dilution of 1:100 and Alexa Fluor 488-conjugated AffiniPure Goat Anti-Rabbit IgG(H+L)