

---

## MS4A3 Polyclonal Antibody

(Catalog # A59926)

---

### Background

Hematopoietic modulator for the G1-S cell cycle transition. Modulates the level of phosphorylation of cyclin-dependent kinase 2 (CDK2) through its direct binding to cyclin-dependent kinase inhibitor 3 (CDKN3/KAP).

### Description

MS4A3 Polyclonal Antibody. Unconjugated. Raised in: Rabbit.

### Formulation

Liquid. 0.03% Proclin 300, 50% Glycerol, 0.01M PBS, PH 7.4.

### Specificity

Human

### Isotype

IgG

### Uniprot ID

Q96HJ5

### Purification

>95%, Protein G purified

### Immunogen

Recombinant Human Membrane-spanning 4-domains subfamily A member 3 protein (1-49AA)

### Storage

Shipped at 4°C. Upon delivery aliquot and store at -20°C (short-term) or -80°C (long-term). Avoid repeated freeze.

### Alternative Names

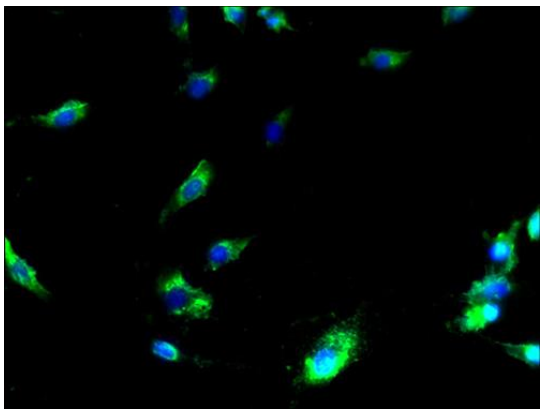
Membrane-spanning 4-domains subfamily A member 3, MS4A3, CD20L, HTM4, CD20 antigen-like protein, Hematopoietic-specific transmembrane protein 4, HTm4

### Application

ELISA, IF; Recommended dilution: IF:1:50-1:200

---





Immunofluorescent analysis of U251 cells using MS4A3 Polyclonal Antibody at a dilution of 1:100 and Alexa Fluor 488-conjugated AffiniPure Goat Anti-Rabbit IgG(H+L)