

KRCC1 Polyclonal Antibody

(Catalog # A59582)

Background

mitophagy in response to mitochondrial depolarization

Description

KRCC1 Polyclonal Antibody. Unconjugated. Raised in: Rabbit.

Formulation

Liquid. 0.03% Proclin 300. 50% Glycerol, 0.01M PBS, pH 7.4.

Specificity

Human

Isotype

IgG

Uniprot ID

Q9NPI7

Purification

Affinity purified

Immunogen

Recombinant Human Lysine-rich coiled-coil protein 1 protein (1-259AA)

Storage

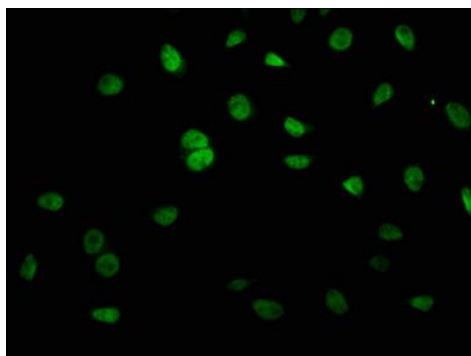
Shipped at 4°C. Upon delivery aliquot and store at -20°C (short-term) or -80°C (long-term). Avoid repeated freeze.

Alternative Names

Lysine-rich coiled-coil protein 1, KRCC1, CHBP2, BM-003, BM-044, Cryptogenic hepatitis-binding protein 2

Application

ELISA, IF; Recommended dilution: IF:1:50-1:200



Immunofluorescence staining of A549 cells with KRCC1 Polyclonal Antibody at 1:66, counter-stained with DAPI. The cells were fixed in 4% formaldehyde, permeabilized using 0.2% Triton X-100 and blocked in 10% normal Goat Serum. The cells were then incubated with the antibody overnight at 4 deg C. The secondary antibody was Alexa Fluor 488-conjugated AffiniPure Goat Anti-Rabbit IgG(H+L).