

KCNH7 Polyclonal Antibody

(Catalog # A59510)

Background

Pore-forming (alpha) subunit of voltage-gated potassium channel. Channel properties may be modulated by cAMP and subunit assembly.

Description

KCNH7 Polyclonal Antibody. Unconjugated. Raised in: Rabbit.

Formulation

Liquid. 0.03% Proclin 300, 50% Glycerol, 0.01M PBS, PH 7.4.

Specificity

Human

Isotype

IgG

Uniprot ID

Q9NS40

Purification

>95%, Protein G purified

Immunogen

Recombinant Human Potassium voltage-gated channel subfamily H member 7 protein (1-300AA)

Storage

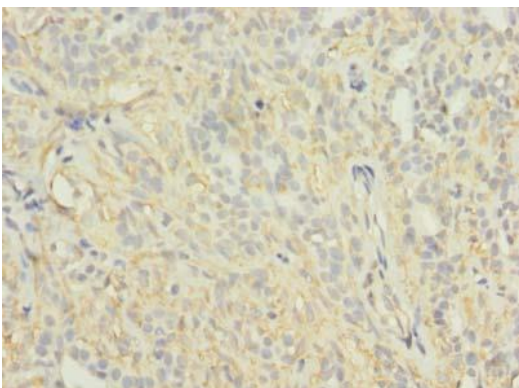
Shipped at 4°C. Upon delivery aliquot and store at -20°C (short-term) or -80°C (long-term). Avoid repeated freeze.

Alternative Names

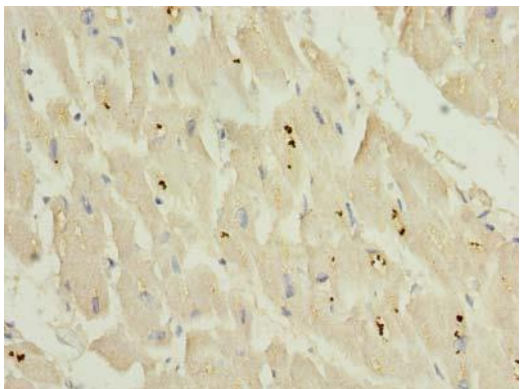
Potassium voltage-gated channel subfamily H member 7, KCNH7, ERG3, Ether-a-go-go-related gene potassium channel 3, ERG-3, Eag-related protein 3, Ether-a-go-go-related protein 3, hERG-3, Voltage-gated potassium channel subunit Kv11.3

Application

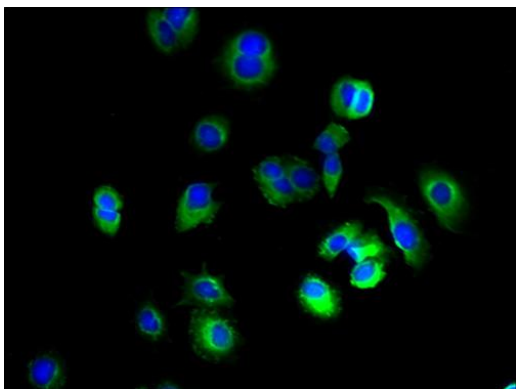
ELISA, IHC, IF; Recommended dilution: IHC:1:20-1:200, IF:1:50-1:200



Immunohistochemistry of paraffin-embedded human breast cancer using KCNH7 Polyclonal Antibody at dilution of 1:100



Immunohistochemistry of paraffin-embedded human heart using KCNH7 Polyclonal Antibody at dilution of 1:100



Immunofluorescent analysis of MCF-7 cells using KCNH7 Polyclonal Antibody at a dilution of 1:100 and Alexa Fluor 488-conjugated AffiniPure Goat Anti-Rabbit IgG(H+L)