

KBTBD4 Polyclonal Antibody

(Catalog #A59506)

Description

KBTBD4 Polyclonal Antibody. Unconjugated. Raised in: Rabbit.

Formulation

0.03% Proclin 300, 50% Glycerol, 0.01M PBS, PH 7.4.

Specificity

Human, Mouse

Isotype

IgG

Uniprot ID

Q9NVX7

Purification

Protein G purified

Immunogen

Recombinant Human Kelch repeat and BTB domain-containing protein 4 protein (151-415AA)

Storage

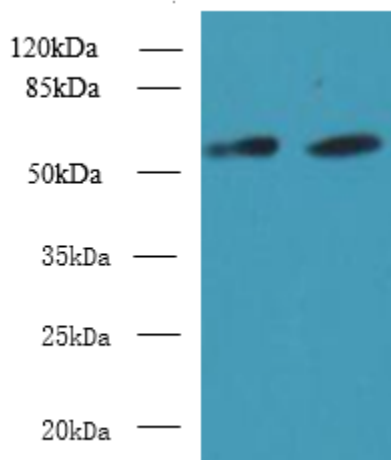
Shipped at 4°C. Upon delivery aliquot and store at -20°C (short-term) or -80°C (long-term). Avoid repeated freeze.

Alternative Names

Kelch repeat and BTB domain-containing protein 4, KBTBD4, BKLHD4, BTB and kelch domain-containing protein 4

Application

ELISA, WB, IHC; Recommended dilution: WB 1:500 - 1:2000, IHC 1:20 - 1:200



Western blot

All Lanes: KBTBD4 Polyclonal Antibody at 10ug/ml

Lane 1: U87 whole cell lysate

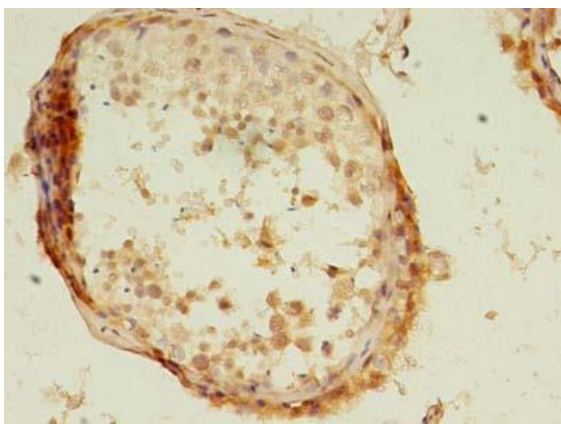
Lane 2: NIH/3T3 whole cell lysate

Secondary

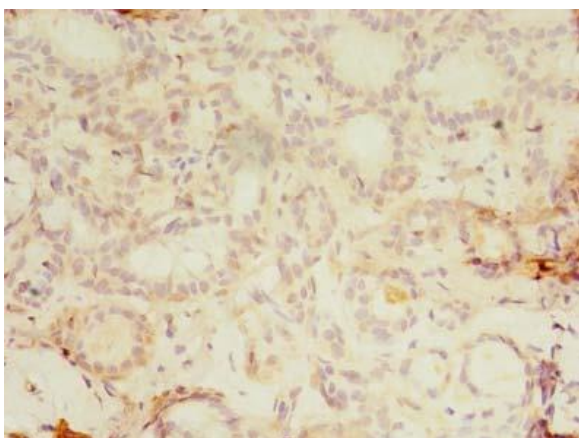
Goat polyclonal to Rabbit IgG at 1/10000 dilution

Predicted band size: 58 kDa

Observed band size: 58 kDa



Immunohistochemistry of paraffin-embedded human testis tissue using KBTBD4 Polyclonal Antibody at dilution of 1:100



immunohistochemistry of paraffin-embedded human breast cancer using KBTBD4 Polyclonal Antibody at dilution of 1:100