
GPR18 Polyclonal Antibody

(Catalog # A59294)

Background

Receptor for N-arachidonyl glycine. The activity of this receptor is mediated by G proteins which inhibit adenylyl cyclase. May contribute to regulation of the immune system.

Description

GPR18 Polyclonal Antibody. Unconjugated. Raised in: Rabbit.

Formulation

0.03% Proclin 300, 50% Glycerol, 0.01M PBS, PH 7.4.

Specificity

Human, Mouse

Isotype

IgG

Uniprot ID

Q14330

Purification

Protein G purified

Immunogen

Recombinant Human N-arachidonyl glycine receptor protein (290-331AA)

Storage

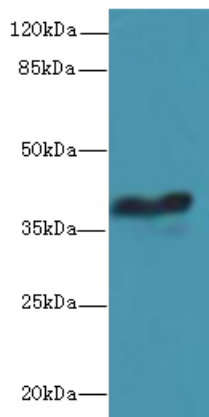
Shipped at 4°C. Upon delivery aliquot and store at -20°C (short-term) or -80°C (long-term). Avoid repeated freeze.

Alternative Names

N-arachidonyl glycine receptor, NAGly receptor, GPR18, GPCRW, G-protein coupled receptor 18

Application

ELISA, WB, IHC, IF; Recommended dilution: WB:1:500-1:2000, IHC:1:20-1:200, IF:1:50-1:200



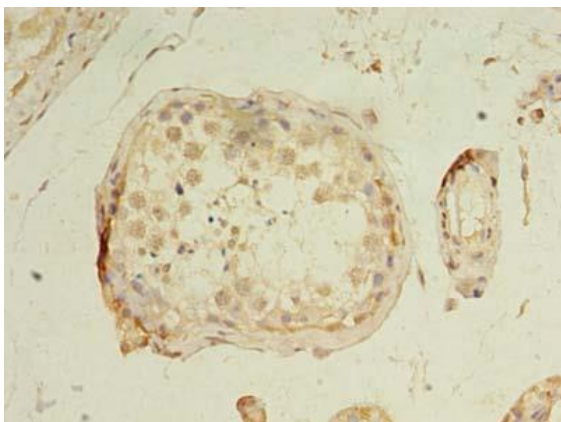
Western blot

All lanes: GPR18 Polyclonal Antibody at 8ug/ml+ Mouse brain tissue

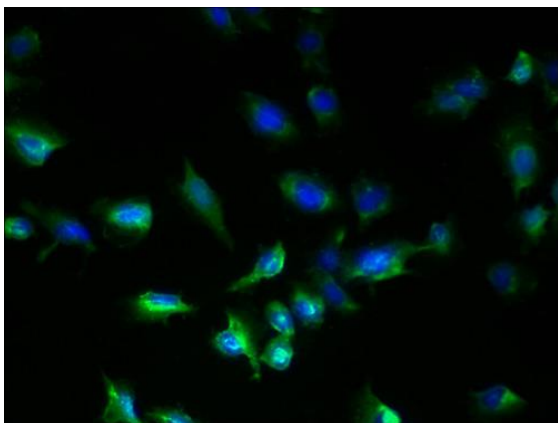
Goat polyclonal to rabbit at 1/10000 dilution

Predicted band size: 38 kDa

Observed band size: 38 kDa



Immunohistochemistry of paraffin-embedded human testis tissue using GPR18 Polyclonal Antibody at dilution of 1:100



Immunofluorescent analysis of U251 cells using GPR18 Polyclonal Antibody at a dilution of 1:100 and Alexa Fluor 488-conjugated AffiniPure Goat Anti-Rabbit IgG(H+L)