

## GJB3 Polyclonal Antibody

(Catalog # A59234)

### Background

One gap junction consists of a cluster of closely packed pairs of transmembrane channels, the connexons, through which materials of low MW diffuse from one cell to a neighboring cell.

### Description

GJB3 Polyclonal Antibody. Unconjugated. Raised in: Rabbit.

### Formulation

Liquid. 0.03% Proclin 300, 50% Glycerol, 0.01M PBS, PH 7.4.

### Specificity

Human, Mouse

### Isotype

IgG

### Uniprot ID

O75712

### Purification

>95%, Protein G purified

### Immunogen

Recombinant Human Gap junction beta-3 protein (211-270AA)

### Storage

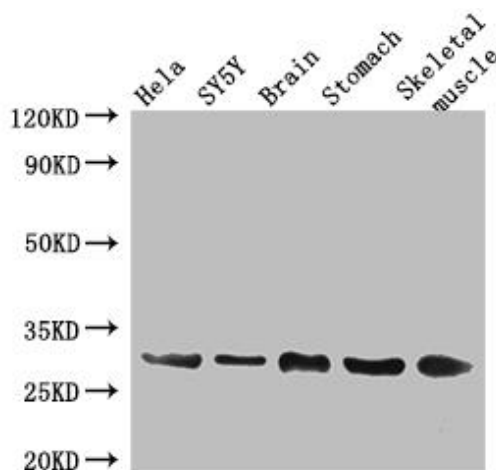
Shipped at 4°C. Upon delivery aliquot and store at -20°C (short-term) or -80°C (long-term). Avoid repeated freeze.

### Alternative Names

Gap junction beta-3 protein, GJB3, CX31, Connexin-31, Cx31

### Application

ELISA, WB, IHC, IF; Recommended dilution: WB:1:500-1:5000, IHC:1:20-1:200, IF:1:50-1:200



### Western Blot

Positive WB detected in: HeLa whole cell lysate, SH-SY5Y whole cell lysate, Mouse brain tissue, Mouse stomach tissue, Mouse skeletal muscle tissue

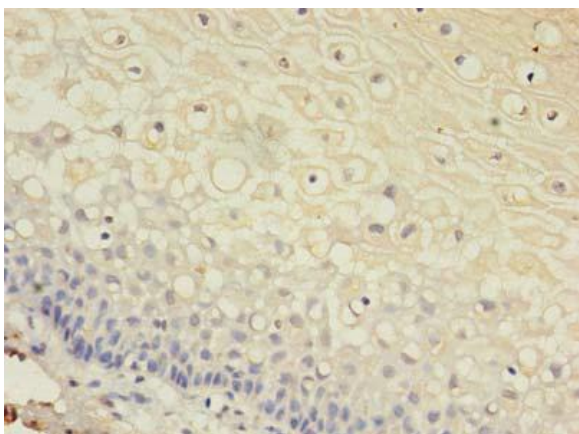
All lanes: GJB3 Polyclonal Antibody at 3ug/ml

Secondary

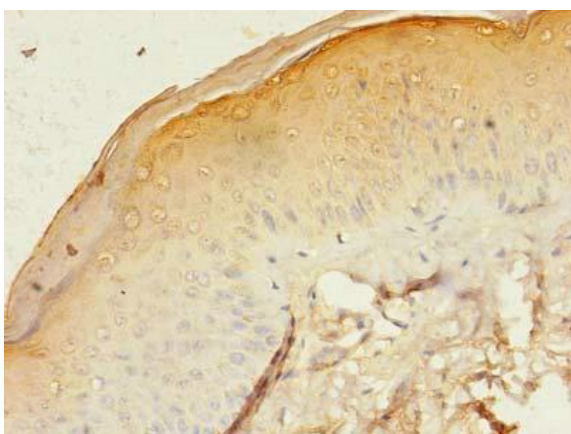
Goat polyclonal to rabbit IgG at 1/50000 dilution

Predicted band size: 31 kDa

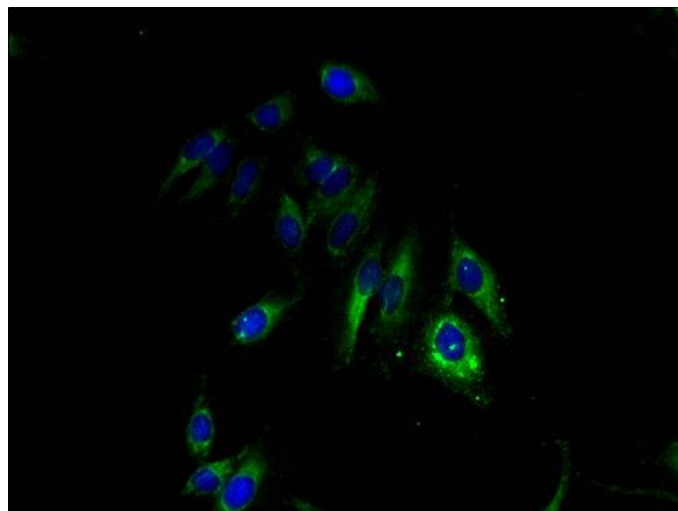
Observed band size: 31 kDa



Immunohistochemistry of paraffin-embedded human cervical cancer at dilution of 1:100



Immunohistochemistry of paraffin-embedded human skin tissue at dilution of 1:100



Immunofluorescent analysis of HeLa cells at a dilution of 1:100 and Alexa Fluor 488-conjugated AffiniPure Goat Anti-Rabbit IgG(H+L)