
CLEC4C Polyclonal Antibody

(Catalog # A58582)

Background

Involved in antigen-capturing. Target ligand into antigen processing and peptide-loading compartments for presentation to T-cells. May mediate potent inhibition of induction of IFN-alpha/beta expression in plasmacytoid dendritic cells. May act as a signaling receptor that activates protein-tyrosine kinases and mobilizes intracellular calcium. Does not seem to bind mannose.

Description

CLEC4C Polyclonal Antibody. Unconjugated. Raised in: Rabbit.

Formulation

Liquid. 0.03% Proclin 300, 50% Glycerol, 0.01M PBS, PH 7.4.

Specificity

Human

Isotype

IgG

Uniprot ID

Q8WTT0

Purification

>95%, Protein G purified

Immunogen

Recombinant Human C-type lectin domain family 4 member C protein (45-213AA)

Storage

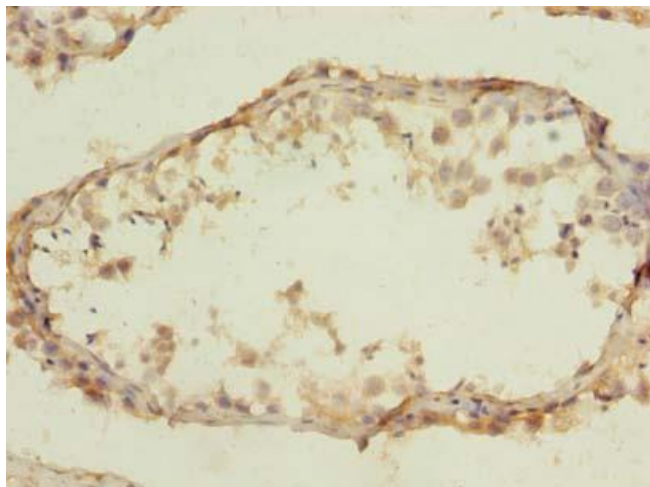
Shipped at 4°C. Upon delivery aliquot and store at -20°C (short-term) or -80°C (long-term). Avoid repeated freeze.

Alternative Names

C-type lectin domain family 4 member C, CLEC4C, BDCA2, CLECSF11, CLECSF7, DLEC, HECL, UNQ9361/PRO34150, Blood dendritic cell antigen 2, BDCA-2, C-type lectin superfamily member 7, Dendritic lectin, CD_antigen: CD303

Application

ELISA, IHC; Recommended dilution: IHC:1:20-1:20000, ICC (1:100-1:200)



Immunohistochemistry of paraffin-embedded human testis using CLEC4C Polyclonal Antibody at dilution of 1:100