

CCDC108 Polyclonal Antibody

(Catalog # A58454)

Background

poly(A) RNA binding

Description

CCDC108 Polyclonal Antibody. Unconjugated. Raised in: Rabbit.

Formulation

0.03% Proclin 300, 50% Glycerol, 0.01M PBS, PH 7.4.

Specificity

Human

Isotype

IgG

Uniprot ID

Q6ZU64

Purification

Protein G purified

Immunogen

Recombinant Human Cilia- and flagella-associated protein 65 protein (2-164AA)

Storage

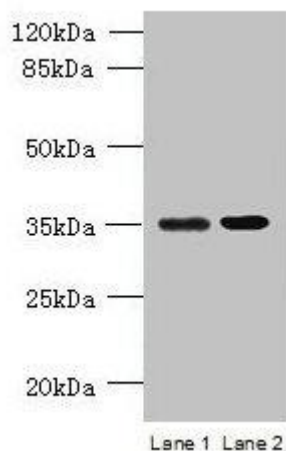
Shipped at 4°C. Upon delivery aliquot and store at -20°C (short-term) or -80°C (long-term). Avoid repeated freeze.

Alternative Names

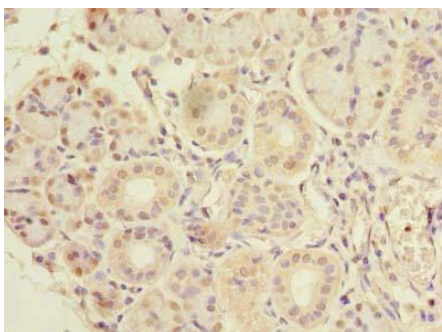
Coiled-coil domain-containing protein 108, CCDC108

Application

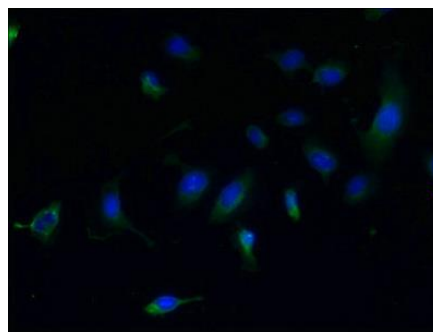
ELISA, WB, IHC, IF; Recommended dilution: WB:1:500-1:2000, IHC:1:20-1:200, IF:1:50-1:200



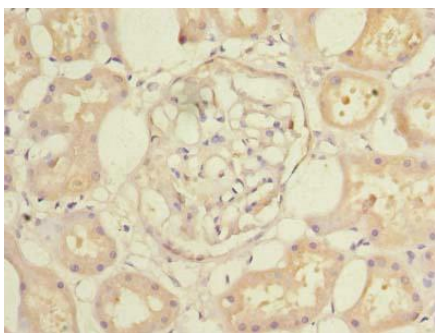
Western blot
All lanes: CCDC108 Polyclonal Antibody at 8ug/ml
Lane 1: U251 whole cell lysate
Lane 2: U87 whole cell lysate
Secondary
Goat polyclonal to rabbit IgG at 1/10000 dilution
Predicted band size: 218, 19, 82, 88 kDa
Observed band size: 35 kDa



Immunohistochemistry of paraffin-embedded human pancreatic tissue using CCDC108 Polyclonal Antibody at dilution of 1:100



Immunofluorescent analysis of U251 cells using CCDC108 Polyclonal Antibody at dilution of 1:100 and Alexa Fluor 488-conjugated AffiniPure Goat Anti-Rabbit IgG(H+L)



Immunohistochemistry of paraffin-embedded human kidney tissue using CCDC108 Polyclonal Antibody at dilution of 1:100