
CALM1 Polyclonal Antibody

(Catalog #A58418)

Background

Calmodulin mediates the control of a large number of enzymes, ion channels, aquaporins and other proteins by Ca(2+). Among the enzymes to be stimulated by the calmodulin-Ca(2+) complex are a number of protein kinases and phosphatases. Together with CCP110 and centrin, is involved in a genetic pathway that regulates the centrosome cycle and progression through cytokinesis.

Description

CALM1 Polyclonal Antibody. Unconjugated. Raised in: Rabbit.

Formulation

Liquid. 0.03% Proclin 300. 50% Glycerol, 0.01M PBS, PH 7.4.

Specificity

Human

Isotype

IgG

Uniprot ID

P0DP23

Purification

Protein G purified

Immunogen

Recombinant Human Calmodulin-1 protein (2-149AA)

Storage

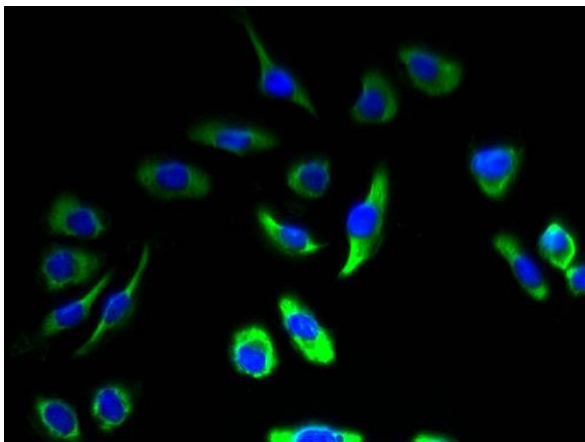
Shipped at 4°C. Upon delivery aliquot and store at -20°C (short-term) or -80°C (long-term). Avoid repeated freeze.

Alternative Names

Calmodulin, CaM, CALM1, CALM, CAM, CAM1, AND, CALM2, CAM2, CAMB, AND, CALM3, CALML2, CAM3, CAMC, CAMIII

Application

ELISA, IF; Recommended dilution: IF:1:50-1:200



Immunofluorescent analysis of A549 cells at a dilution of 1:100 and Alexa Fluor 488-conjugated AffiniPure Goat Anti-Rabbit IgG(H+L)