

BATF Polyclonal Antibody

(Catalog # A58242)

Background

AP-1 family transcription factor that controls the differentiation of lineage-specific cells in the immune system: specifically mediates the differentiation of T-helper 17 cells (Th17), follicular T-helper cells (Tfh), CD8(+) dendritic cells and class-switch recombination (CSR) in B-cells. Acts via the formation of a heterodimer with JUNB that recognizes and binds DNA sequence 5'-TGA[CG]TCA-3'. The BATF-JUNB heterodimer also forms a complex with IRF4 (or IRF8) in immune cells, leading to recognition of AICE sequence (5'-TGAnTCA/GAAA-3'), an immune-specific regulatory element, followed by cooperative binding of BATF and IRF4 (or IRF8) and activation of genes. Controls differentiation of T-helper cells producing interleukin-17 (Th17 cells) by binding to Th17-associated gene promoters: regulates expression of the transcription factor RORC itself and RORC target genes such as IL17 (IL17A or IL17B). Also involved in differentiation of follicular T-helper cells (Tfh) by directing expression of BCL6 and MAF. In B-cells, involved in class-switch recombination (CSR) by controlling the expression of both AICDA and of germline transcripts of the intervening heavy-chain region and constant heavy-chain region (I(H)-C(H)). Following infection, can participate in CD8(+) dendritic cell differentiation via interaction with IRF4 and IRF8 to mediate cooperative gene activation. Regulates effector CD8(+) T-cell differentiation by regulating expression of SIRT1. Following DNA damage, part of a differentiation checkpoint that limits self-renewal of hematopoietic stem cells (HSCs): up-regulated by STAT3, leading to differentiation of HSCs, thereby restricting self-renewal of HSCs.

Description

BATF Polyclonal Antibody. Unconjugated. Raised in: Rabbit.

Formulation

0.03% Proclin 300, 50% Glycerol, 0.01M PBS, PH 7.4.

Specificity

Human, Mouse

Isotype

IgG

Uniprot ID

Q16520

Purification

Protein G purified

Immunogen

Recombinant Human Basic leucine zipper transcriptional factor ATF-like protein (1-125AA)

Storage

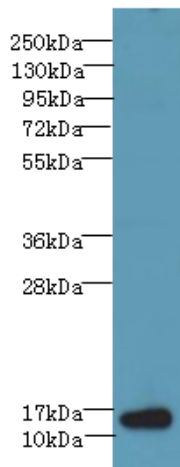
Shipped at 4°C. Upon delivery aliquot and store at -20°C (short-term) or -80°C (long-term). Avoid repeated freeze.

Alternative Names

Basic leucine zipper transcriptional factor ATF-like, BATF, B-cell-activating transcription factor, B-ATF, SF-HT-activated gene 2 protein, SFA-2

Application

ELISA, WB, IHC; Recommended dilution: WB:1:500-1:2000, IHC:1:20-1:200



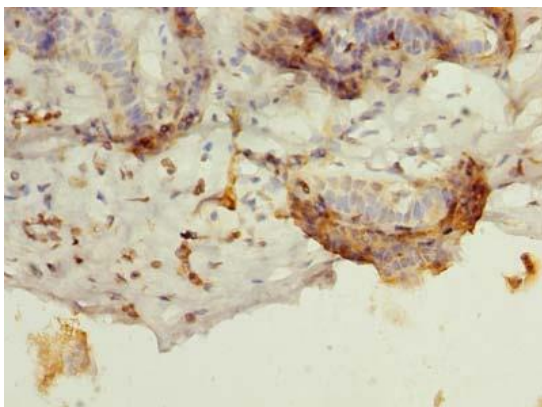
Western blot

All lanes: BATF Polyclonal Antibody at 6ug/ml+ NIH/3T3 whole cell lysate

Goat polyclonal to rabbit at 1/10000 dilution

Predicted band size: 14 kDa

Observed band size: 14 kDa



Immunohistochemistry of paraffin-embedded human breast cancer using BATF Polyclonal Antibody at dilution of 1:100