

ATP1B3 Polyclonal Antibody

(Catalog # A58202)

Background

This is the non-catalytic component of the active enzyme, which catalyzes the hydrolysis of ATP coupled with the exchange of Na(+) and K(+) ions across the plasma membrane. The exact function of the beta-3 subunit is not known.

Description

ATP1B3 Polyclonal Antibody. Unconjugated. Raised in: Rabbit.

Formulation

0.03% Proclin 300. 50% Glycerol, 0.01M PBS, pH 7.4.

Specificity

Human

Isotype

IgG

Uniprot ID

P54709

Purification

Protein G purified

Immunogen

Recombinant Human Sodium/potassium-transporting ATPase subunit beta-3 protein (57-279AA)

Storage

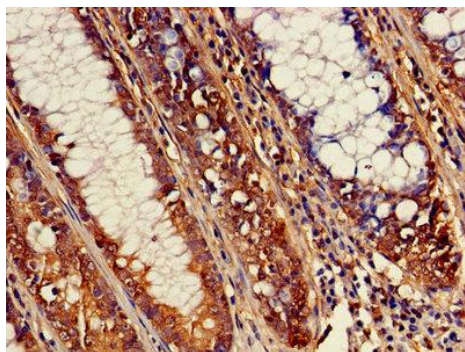
Shipped at 4°C. Upon delivery aliquot and store at -20°C (short-term) or -80°C (long-term). Avoid repeated freeze.

Alternative Names

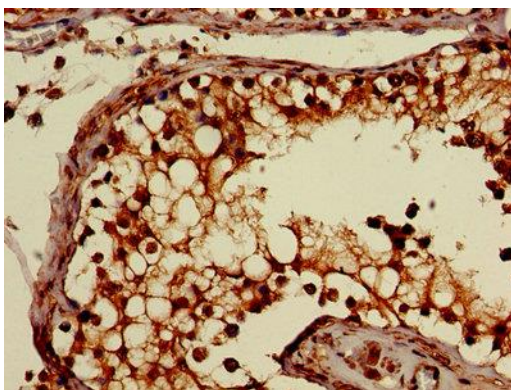
Sodium/potassium-transporting ATPase subunit beta-3, ATP1B3, Sodium/potassium-dependent ATPase subunit beta-3, ATPB-3, CD_antigen: CD298

Application

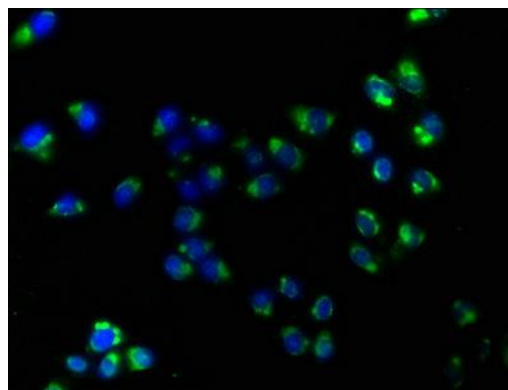
ELISA, IHC, IF; Recommended dilution: IHC:1:20-1:200, IF:1:50-1:200



Immunohistochemistry of paraffin-embedded human colon cancer using ATP1B3 Antibody at dilution of 1:100.



Immunohistochemistry of paraffin-embedded human testis tissue using ATP1B3 Antibody at dilution of 1:100



Immunofluorescence staining of HeLa cells with ATP1B3 Antibody at 1:160, counter-stained with DAPI. The cells were fixed in 4% formaldehyde, permeabilized using 0.2% Triton X-100 and blocked in 10% normal Goat Serum. The cells were then incubated with the antibody overnight at 4°C. The secondary antibody was Alexa Fluor 488-conjugated AffiniPure Goat Anti-Rabbit IgG(H+L).