

ARL14 Polyclonal Antibody

(Catalog # A58138)

Background

GTPase that recruits MYO1E to MHC class II-containing vesicles via the effector protein ARL14EP and hence controls the movement of these vesicles along the actin cytoskeleton in dendritic cells.

Description

ARL14 Polyclonal Antibody. Unconjugated. Raised in: Rabbit.

Formulation

0.03% Proclin 300. 50% Glycerol, 0.01M PBS, pH 7.4.

Specificity

Human

Isotype

IgG

Uniprot ID

Q8N4G2

Purification

Affinity Purified

Immunogen

Recombinant Human ADP-ribosylation factor-like protein 14 protein (2-192AA)

Storage

Shipped at 4°C. Upon delivery aliquot and store at -20°C (short-term) or -80°C (long-term). Avoid repeated freeze.

Alternative Names

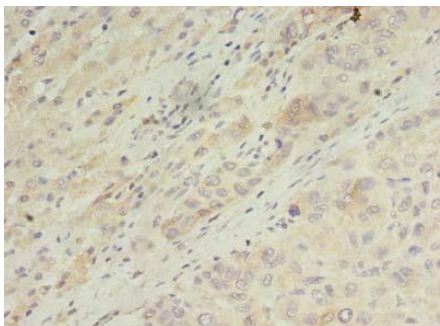
ADP-ribosylation factor-like protein 14, ARL14, ARF7, ADP-ribosylation factor 7

Application

ELISA, WB, IHC; Recommended dilution: WB:1:500-1:2000, IHC:1:20-1:200



Western blot
All lanes: ARL14 Polyclonal Antibody at 0.3ug/ml+ MCF7 whole cell lysate
Goat polyclonal to rabbit at 1/10000 dilution
Predicted band size: 22 kDa
Observed band size: 22 kDa



Immunohistochemistry of paraffin-embedded human liver cancer using ARL14 Polyclonal Antibody at dilution of 1:100