

SEPP1 Polyclonal Antibody

(Catalog #A57909)

Description

SEPP1 Polyclonal Antibody. Unconjugated. Raised in: Rabbit.

Formulation

0.03% Proclin 300. 50% Glycerol, 0.01M PBS, pH 7.4.

Specificity

Human, Mouse

Isotype

IgG

Uniprot ID

P49908

Purification

Protein G purified

Immunogen

Recombinant Human Selenoprotein P protein (20-381AA)

Storage

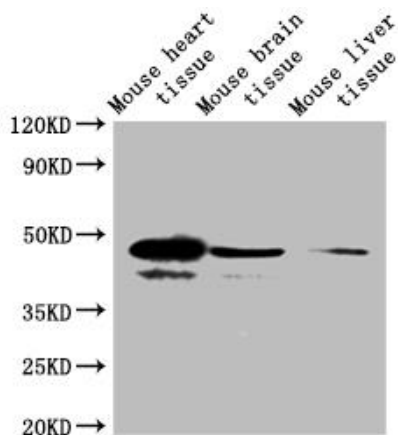
Shipped at 4°C. Upon delivery aliquot and store at -20°C (short-term) or -80°C (long-term). Avoid repeated freeze.

Alternative Names

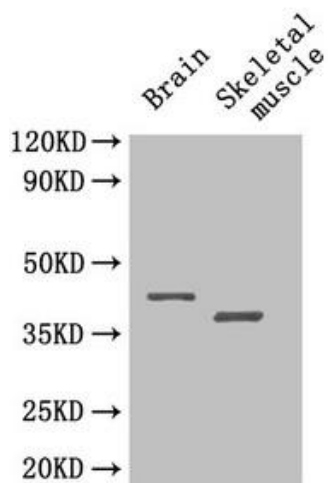
SEPP1 SELP

Application

ELISA, WB, IHC; Recommended dilution: WB:1:500-1:2000, IHC:1:20-1:200



Western blot
All lanes: SEPP1 Polyclonal Antibody at 2µg/ml + Mouse heart tissue
Secondary
Goat polyclonal to rabbit IgG at 1/10000 dilution
Predicted band size: 43 kDa
Observed band size: 43 kDa



Western Blot

Positive WB detected in: Mouse brain tissue, Mouse skeletal muscle tissue

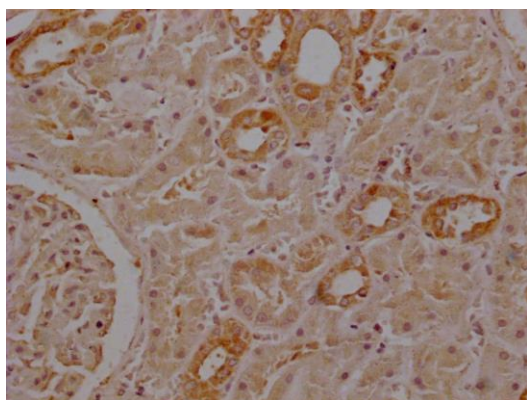
All lanes: SEPP1 Polyclonal Antibody at 4 μ g/ml

Secondary

Goat polyclonal to rabbit IgG at 1/50000 dilution

Predicted band size: 43 kDa

Observed band size: 43, 40 kDa



Immunohistochemistry of paraffin-embedded human kidney tissue using SEPP1 Polyclonal Antibody at dilution of 1:100