

MT1A Polyclonal Antibody

(Catalog # A57677)

Background

Metallothioneins have a high content of cysteine residues that bind various heavy metals; these proteins are transcriptionally regulated by both heavy metals and glucocorticoids.

Description

MT1A Polyclonal Antibody. Unconjugated. Raised in: Rabbit.

Formulation

Liquid. 0.03% Proclin 300, 50% Glycerol, 0.01M PBS, PH 7.4.

Specificity

Human

Isotype

IgG

Uniprot ID

P04731

Purification

>95%, Protein G purified

Immunogen

Recombinant Human Metallothionein-1A protein (1-59AA)

Storage

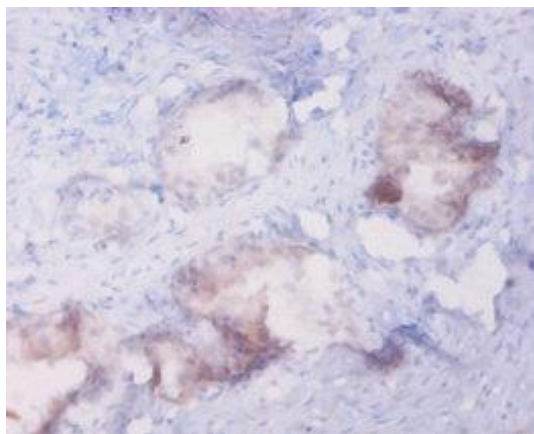
Shipped at 4°C. Upon delivery aliquot and store at -20°C (short-term) or -80°C (long-term). Avoid repeated freeze.

Alternative Names

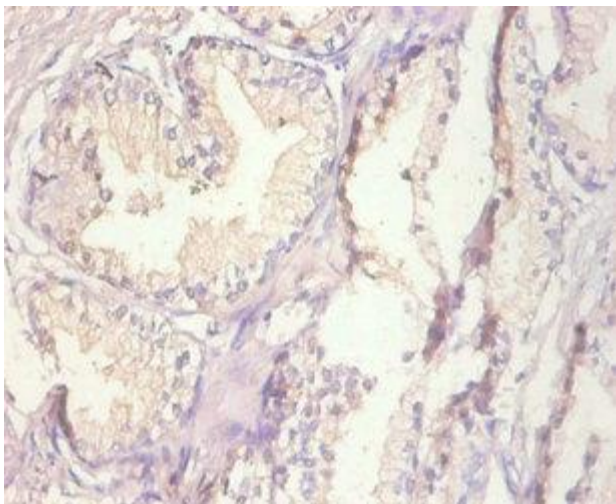
Metallothionein-1A, MT1A, MT1S

Application

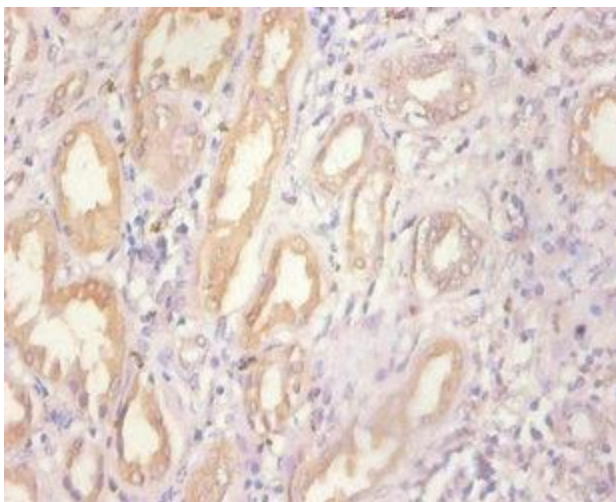
ELISA, IHC; Recommended dilution: IHC:1:20-1:200



Immunohistochemistry of paraffin-embedded human prostate at dilution of 1:20



Immunohistochemistry of paraffin-embedded human prostate tissue at dilution of 1:100



Immunohistochemistry of paraffin-embedded human kidney tissue at dilution of 1:100