

# SERPINB14 Polyclonal Antibody

(Catalog # A56374)

## Background

Non-inhibitory serpin. Storage protein of egg white.

## Description

SERPINB14 Polyclonal Antibody. Unconjugated. Raised in: Rabbit.

## Formulation

Liquid. 0.03% Proclin 300. 50% Glycerol, 0.01M PBS, PH 7.4.

## Specificity

Chicken

## Isotype

IgG

## Uniprot ID

P01012

## Purification

Affinity purified

## Immunogen

Chicken Ovalbumin (Native Protein)

## Storage

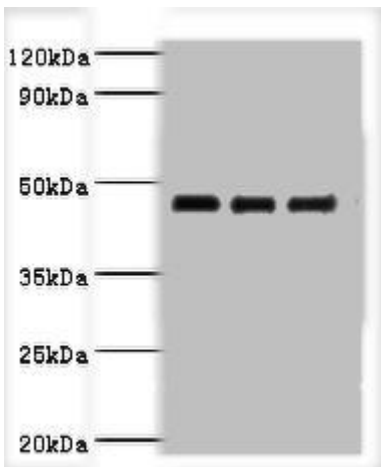
Shipped at 4°C. Upon delivery aliquot and store at -20°C (short-term) or -80°C (long-term). Avoid repeated freeze.

## Alternative Names

Allergen Gal d II, Egg albumin, Plakalbumin, SERPINB14

## Application

ELISA, WB; Recommended dilution: WB:1:1000-1:5000



## Western blot

All lanes: SERPINB14 Polyclonal Antibody at

2ug/ml+Ovalbumin

Lane 1: Ovalbumin at 1: 4000

Lane 2: Ovalbumin at 1: 8000

Lane 3: Ovalbumin at 1: 16000

Secondary

Goat polyclonal to rabbit at 1/10000 dilution

Predicted band size: 46kDa

Observed band size: 46kDa