

Fgf23 Polyclonal Antibody

(Catalog # A55822)

Background

Regulator of phosphate homeostasis. Inhibits renal tubular phosphate transport by reducing SLC34A1 levels. Regulator of vitamin-D metabolism. Negatively regulates osteoblasts differentiation and matrix mineralization. Acts directly on the parathyroid to decrease PTH secretion. Upregulates EGR1. expression in the presence of KL.

Description

Fgf23 Polyclonal Antibody. Unconjugated. Raised in: Rabbit.

Formulation

Liquid. 0.03% Proclin 300, 50% Glycerol, 0.01M PBS, PH 7.4.

Specificity

Rat

Isotype

IgG

Uniprot ID

Q8VI82

Purification

>95%, Protein G purified

Immunogen

Recombinant Rat Fibroblast growth factor 23 protein (25-251AA)

Storage

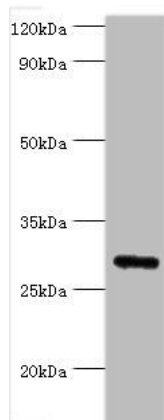
Shipped at 4°C. Upon delivery aliquot and store at -20°C (short-term) or -80°C (long-term). Avoid repeated freeze.

Alternative Names

FGF-23, Fgf23

Application

ELISA, WB; Recommended dilution: WB:1:1000-1:5000



Western blot

All lanes: Fgf23 Polyclonal Antibody at 2ug/ml+rat heart tissue
Secondary
Goat polyclonal to rabbit at 1/10000 dilution
Predicted band size: 28kDa
Observed band size: 28kDa