

SERPINB3 Polyclonal Antibody

(Catalog # A55751)

Background

May act as a papain-like cysteine protease inhibitor to modulate the host immune response against tumor cells. Also functions as an inhibitor of UV-induced apoptosis via suppression of the activity of c-Jun NH(2)-terminal kinase (JNK1).

Description

SERPINB3 Polyclonal Antibody. Unconjugated. Raised in: Rabbit.

Formulation

0.03% Proclin 300, 50% Glycerol, 0.01M PBS, PH 7.4

Specificity

Human

Isotype

IgG

Uniprot ID

P29508

Purification

Protein G purified

Immunogen

Recombinant Human Serpin B3 protein (2-383AA)

Storage

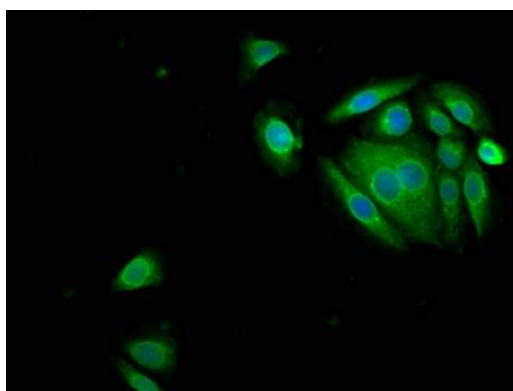
Shipped at 4°C. Upon delivery aliquot and store at -20°C (short-term) or -80°C (long-term). Avoid repeated freeze.

Alternative Names

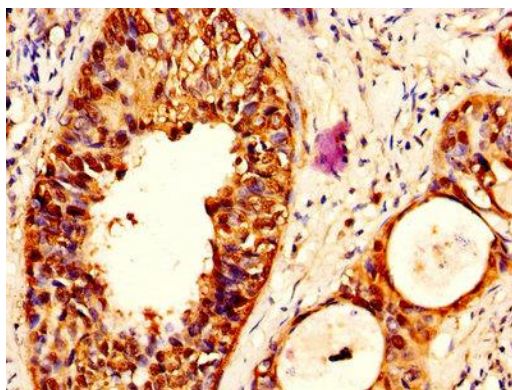
Protein T4-A, Squamous cell carcinoma antigen 1, SCCA-1, SERPINB3, SCCA, SCCA1

Application

ELISA, IHC, IF; Recommended dilution: IHC:1:500-1:1000, IF:1:50-1:200



Immunofluorescence staining of A549 cells with SERPINB3 Antibody at 1:150, counter-stained with DAPI. The cells were fixed in 4% formaldehyde, permeabilized using 0.2% Triton X-100 and blocked in 10% normal Goat Serum. The cells were then incubated with the antibody overnight at 4°C. The secondary antibody was Alexa Fluor 488-conjugated AffiniPure Goat Anti-Rabbit IgG(H+L).



IHC image of SERPINB3 Antibody diluted at 1:500 and staining in paraffin-embedded human cervical cancer performed on a Leica Bond™ system. After dewaxing and hydration, antigen retrieval was mediated by high pressure in a citrate buffer (pH 6.0). Section was blocked with 10% normal goat serum 30min at RT. Then primary antibody (1% BSA) was incubated at 4°C overnight. The primary is detected by a biotinylated secondary antibody and visualized using an HRP conjugated SP system.