

---

## PODXL Polyclonal Antibody

(Catalog #A54939)

---

### Background

Involved in the regulation of both adhesion and cell morphology and cancer progression. Function as an anti-adhesive molecule that maintains an open filtration pathway between neighboring foot processes in the podocyte by charge repulsion. Acts as a pro-adhesive molecule, enhancing the adherence of cells to immobilized ligands, increasing the rate of migration and cell-cell contacts in an integrin-dependent manner. Induces the formation of apical actin-dependent microvilli. Involved in the formation of a preapical plasma membrane subdomain to set up initial epithelial polarization and the apical lumen formation during renal tubulogenesis. Plays a role in cancer development and aggressiveness by inducing cell migration and invasion through its interaction with the actin-binding protein EZR. Affects EZR-dependent signaling events, leading to increased activities of the MAPK and PI3K pathways in cancer cells.

### Description

PODXL Polyclonal Antibody. Unconjugated. Raised in: Rabbit.

### Formulation

0.03% Proclin 300, 50% Glycerol, 0.01M PBS, PH 7.4.

### Specificity

Human

### Isotype

IgG

### Uniprot ID

O00592

### Purification

Protein G purified

### Immunogen

Recombinant Human Podocalyxin protein (32-458AA)

### Storage

Shipped at 4°C. Upon delivery aliquot and store at -20°C (short-term) or -80°C (long-term). Avoid repeated freeze.

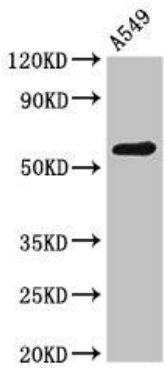
### Alternative Names

GCTM-2 antigen, Gp200, Podocalyxin-like protein 1, PODXL , PCLP, PCLP1

### Application

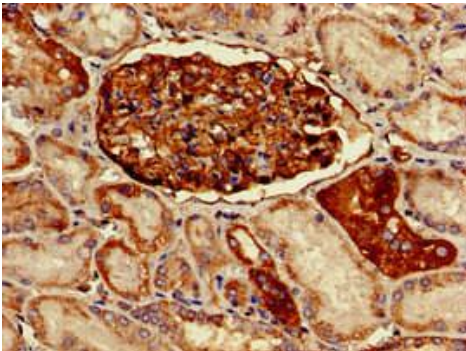
ELISA, WB, IHC, IF; Recommended dilution: WB:1:500 - 1:5000, IHC:1:20 - 1:200, IF:1:50 - 1:200

---

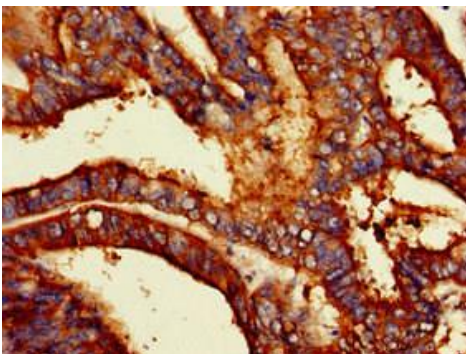


**Western Blot**

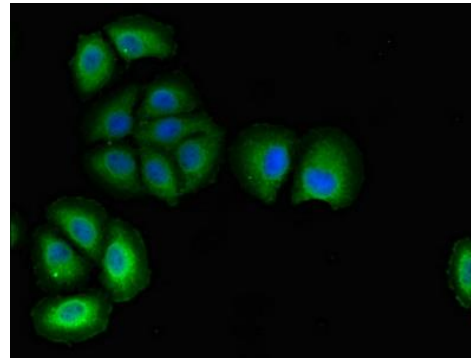
Positive WB detected in: A549 cell lysate  
 All lanes: PODXL Polyclonal Antibody at 2.6ug/ml  
 Secondary  
 Goat polyclonal to rabbit IgG at 1/50000 dilution  
 Predicted band size: 59, 56 kDa  
 Observed band size: 59 kDa



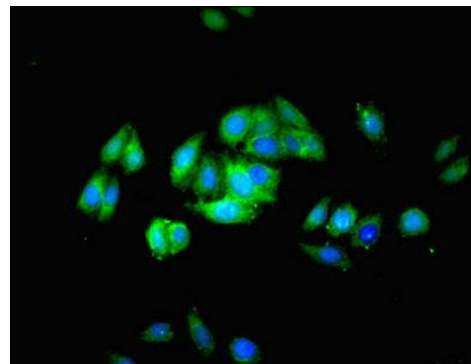
Immunohistochemistry of paraffin-embedded human kidney tissue using PODXL Polyclonal Antibody at dilution of 1:100



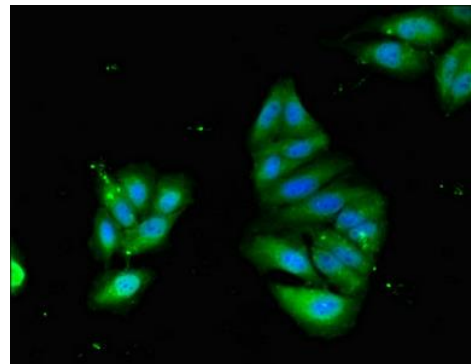
Immunohistochemistry of paraffin-embedded human endometrial cancer using PODXL Polyclonal Antibody at dilution of 1:100



Immunofluorescent analysis of A549 cells using PODXL Polyclonal Antibody at a dilution of 1:100 and Alexa Fluor 488-conjugated AffiniPure Goat Anti-Rabbit IgG (H+L)



Immunofluorescent analysis of HeLa cells using PODXL Polyclonal Antibody at a dilution of 1:100 and Alexa Fluor 488-conjugated AffiniPure Goat Anti-Rabbit IgG (H+L)



Immunofluorescent analysis of HepG2 cells using PODXL Polyclonal Antibody at a dilution of 1:100 and Alexa Fluor 488-conjugated AffiniPure Goat Anti-Rabbit IgG (H+L)