

CHRNA1 Polyclonal Antibody

(Catalog # A54824)

Background

After binding acetylcholine, the AChR responds by an extensive change in conformation that affects all subunits and leads to opening of an ion-conducting channel across the plasma membrane.

Description

CHRNA1 Polyclonal Antibody. Unconjugated. Raised in: Rabbit.

Formulation

Liquid. 0.03% Proclin 300, 50% Glycerol, 0.01M PBS, PH 7.4.

Specificity

Torpedo californica

Isotype

IgG

Uniprot ID

P02710

Purification

>95%, Protein G purified

Immunogen

Recombinant Torpedo californica Acetylcholine receptor subunit alpha protein (25-234AA)

Storage

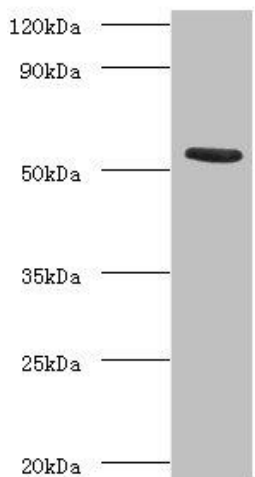
Shipped at 4°C. Upon delivery aliquot and store at -20°C (short-term) or -80°C (long-term). Avoid repeated freeze.

Alternative Names

CHRNA1

Application

ELISA, WB; Recommended dilution: WB:1:1000-1:5000



Western blot

All lanes: CHRNA1 Polyclonal Antibody at 2ug/ml+recombinant Acetylcholine receptor subunit alpha protein 0.1ug

Secondary

Goat polyclonal to Rabbit IgG at 1/15000 dilution

Predicted band size: 53kDa

Observed band size: 53kDa