

RPL28 Polyclonal Antibody

(Catalog # A53812)

Description

RPL28 Polyclonal Antibody. Unconjugated. Raised in: Rabbit.

Formulation

Liquid. 0.03% Proclin 300, 50% Glycerol, 0.01M PBS, PH 7.4.

Specificity

Human

Isotype

IgG

Uniprot ID

P46779

Purification

>95%, Protein G purified

Immunogen

Recombinant Human 60S ribosomal protein L28 protein (2-137AA)

Storage

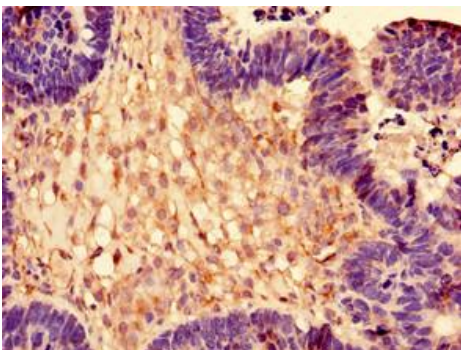
Shipped at 4°C. Upon delivery aliquot and store at -20°C (short-term) or -80°C (long-term). Avoid repeated freeze.

Alternative Names

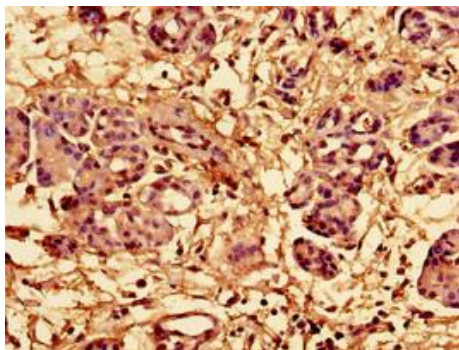
RPL28

Application

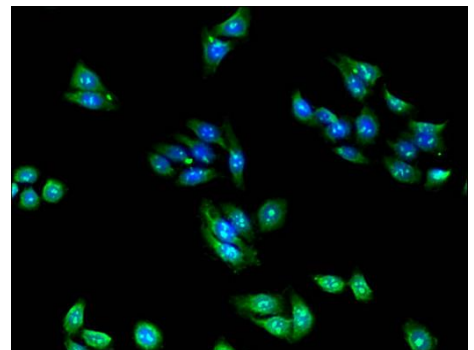
ELISA, IHC, IF; Recommended dilution: IHC:1:20-1:200, IF:1:50-1:200



Immunohistochemistry of paraffin-embedded human ovarian cancer at dilution of 1:100



Immunohistochemistry of paraffin-embedded human pancreatic tissue at dilution of 1:100



Immunofluorescent analysis of HepG2 cells at a dilution of 1:100