

---

## Sod1 Polyclonal Antibody

(Catalog # A53702)

---

### Background

Destroys radicals which are normally produced within the cells and which are toxic to biological systems.

### Description

Sod1 Polyclonal Antibody. Unconjugated. Raised in: Rabbit.

### Formulation

0.03% Proclin 300. 50% Glycerol, 0.01M PBS, pH 7.4.

### Specificity

Mouse, Rat, Human

### Isotype

IgG

### Uniprot ID

P08228

### Purification

Protein G purified

### Immunogen

Recombinant Mouse Superoxide dismutase [Cu-Zn] protein (2-154AA)

### Storage

Shipped at 4°C. Upon delivery aliquot and store at -20°C (short-term) or -80°C (long-term). Avoid repeated freeze.

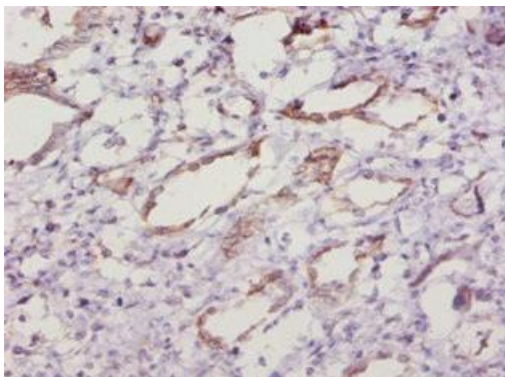
### Alternative Names

Sod1

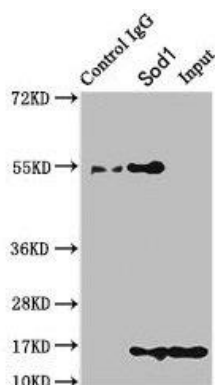
### Application

ELISA, WB, IHC, IP; Recommended dilution: WB:1:500-1:5000, IHC:1:10-1:100, IP:1:200-1:2000

---



Immunohistochemistry of paraffin-embedded human kidney tissue using Sod1 Antibody at dilution of 1:10

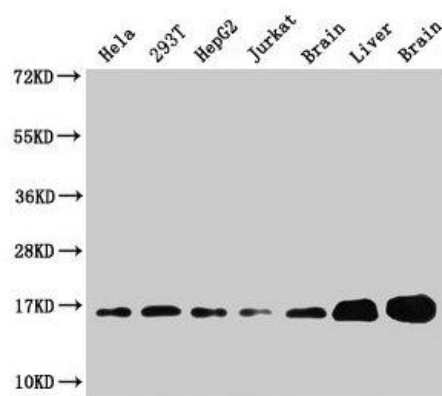


Immunoprecipitating Sod1 in HEK293 whole cell lysate

Lane 1: Rabbit control IgG instead of Sod1 Antibody in HEK293 whole cell lysate. For western blotting, a HRP-conjugated Protein G antibody was used as the secondary antibody (1/2000)

Lane 2: Sod1 Antibody (8ug) + HEK293 whole cell lysate (500ug)

Lane 3: HEK293 whole cell lysate (10ug)



Western Blot

Positive WB detected in: HeLa whole cell lysate, 293T whole cell lysate, HepG2 whole cell lysate, Jurkat whole cell lysate, Rat brain tissue, Rat liver tissue, Mouse brain tissue

All lanes: Sod1 antibody at 3ug/ml

Secondary

Goat polyclonal to rabbit IgG at 1/50000 dilution

Predicted band size: 16 kDa

Observed band size: 16 kDa