

GLA Polyclonal Antibody

(Catalog # A53220)

Background

Alpha-galactosidase is a glycoside hydrolase enzyme that hydrolyses the terminal alpha-galactosyl moieties from glycolipids and glycoproteins.

Description

GLA Polyclonal Antibody. Unconjugated. Raised in: Rabbit.

Formulation

Liquid. 0.03% Proclin 300, 50% Glycerol, 0.01M PBS, PH 7.4.

Specificity

Human

Isotype

IgG

Uniprot ID

P06280

Purification

>95%, Protein G purified

Immunogen

Recombinant Human Alpha-galactosidase A protein (32-429AA)

Storage

Shipped at 4°C. Upon delivery aliquot and store at -20°C (short-term) or -80°C (long-term). Avoid repeated freeze.

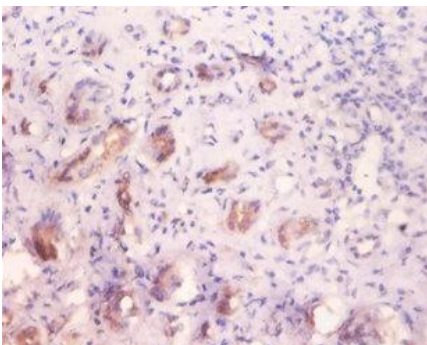
Alternative Names

Alpha-D-galactosidase A, Alpha-D-galactoside galactohydrolase, Melibiase, INN=Agalsidase, GLA

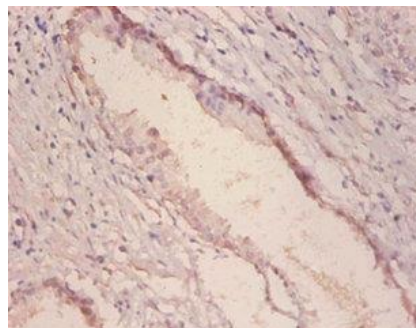
Application

ELISA, IHC; Recommended dilution: IHC:1:20-1:200

ELISA, WB, IHC, IF; Recommended dilution: WB:1:500-1:2000, IHC:1:20-1:200, IF:1:50-1:200



Immunohistochemistry of paraffin embedded human kidney at dilution of 1:100



Immunohistochemistry of paraffin embedded human prostate at dilution of 1:100