

## ELAVL2 Polyclonal Antibody

(Catalog # A53190)

### Background

Binds RNA. Seems to recognize a GAAA motif.

### Description

ELAVL2 Polyclonal Antibody. Unconjugated. Raised in: Rabbit.

### Formulation

Liquid. 0.03% Proclin 300, 50% Glycerol, 0.01M PBS, PH 7.4.

### Specificity

Human, Mouse

### Isotype

IgG

### Uniprot ID

Q12926

### Purification

>95%, Protein G purified

### Immunogen

Recombinant Human ELAV-like protein 2 protein (4-356AA)

### Storage

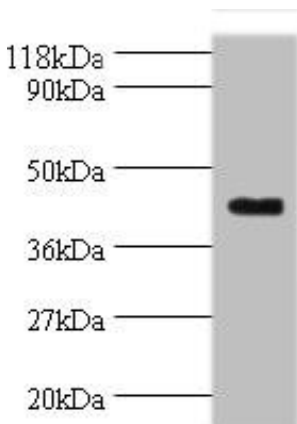
Shipped at 4°C. Upon delivery aliquot and store at -20°C (short-term) or -80°C (long-term). Avoid repeated freeze.

### Alternative Names

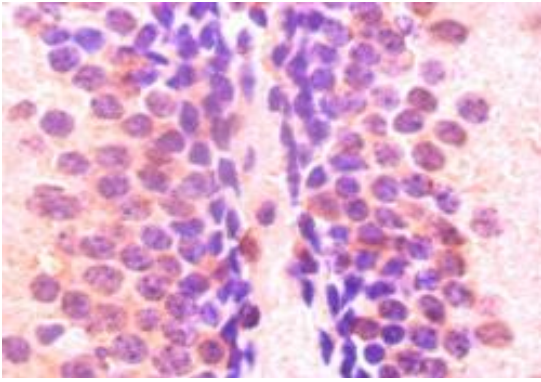
ELAV-like neuronal protein 1, Hu-antigen B, Nervous system-specific RNA-binding protein Hel-N1, ELAVL2, HUB

### Application

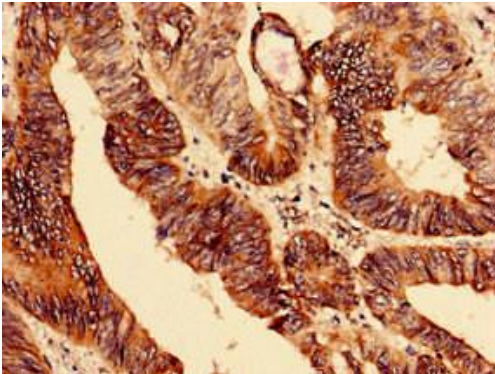
ELISA, WB, IHC, IF; Recommended dilution: WB:1:500-1:5000, IHC:1:20-1:200, IF:1:50-1:200



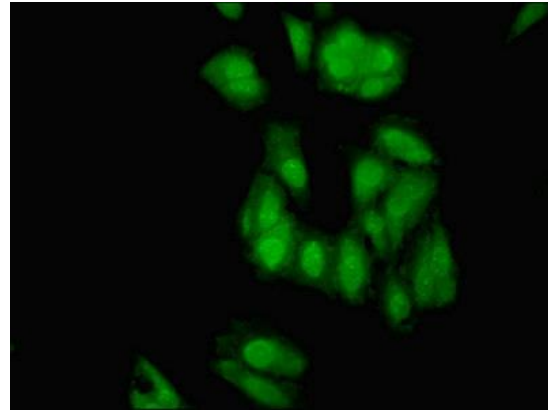
All lanes: ELAVL2 Polyclonal Antibody at 2ug/ml+mouse brain tissue  
Secondary  
Goat polyclonal to Rabbit IgG at 1/10000 dilution  
Predicted band size: 40, 39 kDa  
Observed band size: 40 kDa



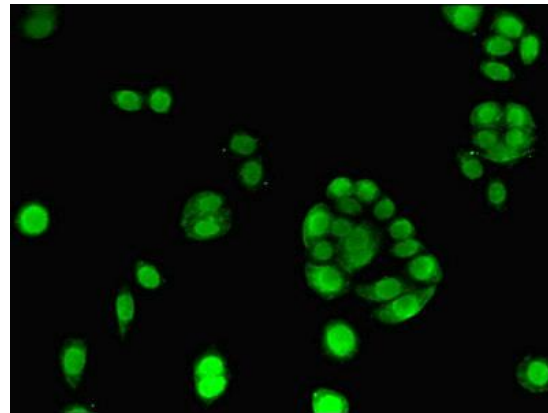
Immunohistochemistry of paraffin-embedded mouse brain using ELAVL2 Polyclonal Antibody at dilution 1:50



Immunocytochemistry analysis of human colon cancer using ELAVL2 Polyclonal Antibody at dilution of 1:100



Immunofluorescent analysis of HeLa cells using ELAVL2 Polyclonal Antibody at a dilution of 1:100 and Alexa Fluor 488-conjugated AffiniPure Goat Anti-Rabbit IgG (H+L)



Immunofluorescent analysis of PC3 cells using ELAVL2 Polyclonal Antibody at a dilution of 1:100 and Alexa Fluor 488-conjugated AffiniPure Goat Anti-Rabbit IgG (H+L)