
HSP90B1 Polyclonal Antibody

(Catalog # A53162)

Background

Molecular chaperone that functions in the processing and transport of secreted proteins. When associated with CNPY3, required for proper folding of Toll-like receptors. By similarity. Functions in endoplasmic reticulum associated degradation (ERAD). Has ATPase activity.

Description

HSP90B1 Polyclonal Antibody. Unconjugated. Raised in: Rabbit.

Formulation

Liquid. 0.03% Proclin 300, 50% Glycerol, 0.01M PBS, PH 7.4.

Specificity

Human

Isotype

IgG

Uniprot ID

P14625

Purification

>95%, Protein G purified

Immunogen

Recombinant Human Endoplasmin protein (27-799AA)

Storage

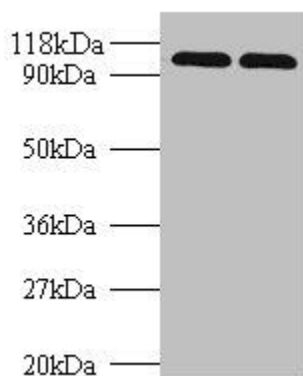
Shipped at 4°C. Upon delivery aliquot and store at -20°C (short-term) or -80°C (long-term). Avoid repeated freeze.

Alternative Names

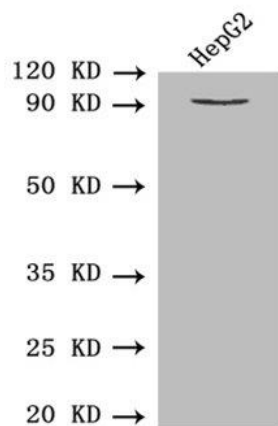
94 kDa glucose-regulated protein Heat shock protein 90 kDa beta member 1 Tumor rejection antigen 1 gp96 homolog HSP90B1, GRP94, TRA1

Application

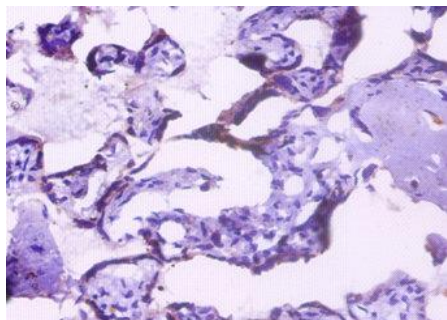
ELISA, WB, IHC, IF; Recommended dilution: WB:1:1000-1:5000, IHC:1:20-1:200, IF:1:50-1:200



All lanes: HSP90B1 Polyclonal Antibody at 2ug/ml
 Lane 1: A549 whole cell lysate
 Lane 2: HepG2 whole cell lysate
 Secondary
 Goat polyclonal to rabbit at 1/10000 dilution
 Predicted band size: 92kDa
 Observed band size: 92kDa



Western blot
 All lanes: HSP90B1 Polyclonal Antibody at 4.5 ug/ml+ HepG-2
 whole cell lysate
 Secondary
 Goat polyclonal to rabbit IgG at 1/10000 dilution
 Predicted band size: 92 kDa
 Observed band size: 92 kDa



Immunohistochemistry of paraffin-embedded human placenta at
 dilution 1:100