
MFGE8 Polyclonal Antibody

(Catalog # A53057)

Background

Plays an important role in the maintenance of intestinal epithelial homeostasis and the promotion of mucosal healing. Promotes VEGF-dependent neovascularization By similarity. Contributes to phagocytic removal of apoptotic cells in many tissues. Specific ligand for the alpha-v/beta-3 and alpha-v/beta-5 receptors. Also binds to phosphatidylserine-enriched cell surfaces in a receptor-independent manner. Zona pellucida-binding protein which may play a role in gamete interaction. Binds specifically to rotavirus and inhibits its replication. Ref. 15. Medin is the main constituent of aortic medial amyloid.

Description

MFGE8 Polyclonal Antibody. Unconjugated. Raised in: Rabbit.

Formulation

Liquid. 0.03% Proclin 300, 50% Glycerol, 0.01M PBS, PH 7.4.

Specificity

Human, Mouse

Isotype

IgG

Uniprot ID

Q08431

Purification

>95%, Protein G purified

Immunogen

Recombinant Human Lactadherin protein (25-334AA)

Storage

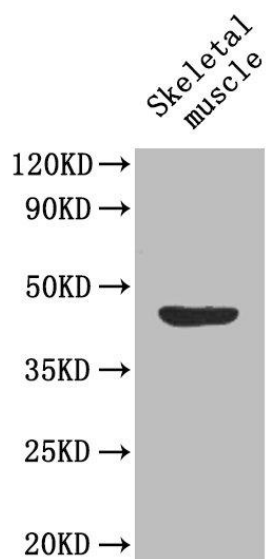
Shipped at 4°C. Upon delivery aliquot and store at -20°C (short-term) or -80°C (long-term). Avoid repeated freeze.

Alternative Names

Breast epithelial antigen BA46 HMFG MFGM Milk fat globule-EGF factor 8 Short name=MFG-E8 SED1 Cleaved into the following 2 chains: Lactadherin short form Medin

Application

ELISA, WB, IHC; Recommended dilution: WB:1:500-1:5000, IHC:1:20-1:200



Western Blot

Positive WB detected in: mouse skeletal muscle

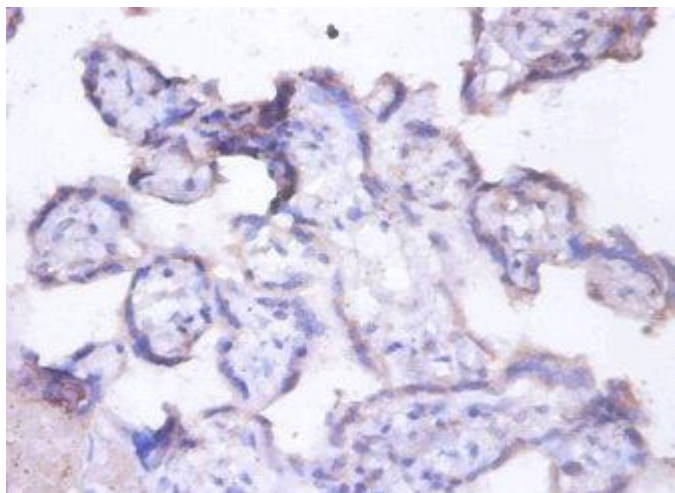
All lanes: MFGE8 Polyclonal Antibody at 1.6ug/ml

Secondary

Goat polyclonal to rabbit IgG at 1/50000 dilution

Predicted band size: 44, 36, 38 kDa

Observed band size: 43 kDa



Immunohistochemistry of paraffin-embedded human placenta at dilution of 1:100