

---

## EGFR Polyclonal Antibody

(Catalog #A52964)

---

### Background

CLEC14A is a member of the C-type lectin domain (CTLD) family that contains one c-type lectin domain and one EGF-like domain.

### Description

EGFR Polyclonal Antibody. Unconjugated. Raised in: Rabbit.

### Formulation

Liquid. 0.03% Proclin 300, 50% Glycerol, 0.01M PBS, PH 7.4.

### Specificity

Human

### Isotype

IgG

### Uniprot ID

P00533

### Purification

>95%, Protein G purified

### Immunogen

Recombinant Human Epidermal growth factor receptor protein (26-645AA)

### Storage

Shipped at 4°C. Upon delivery aliquot and store at -20°C (short-term) or -80°C (long-term). Avoid repeated freeze.

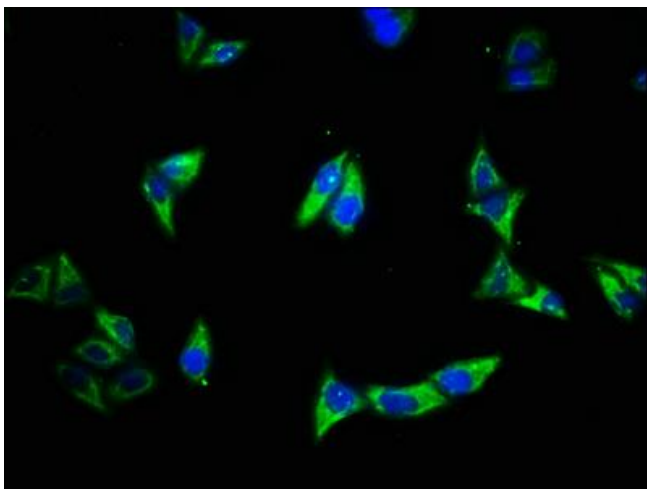
### Alternative Names

Epidermal growth factor receptor 5, CLEC14A, C14orf27, EGFR5, UNQ236/PRO269

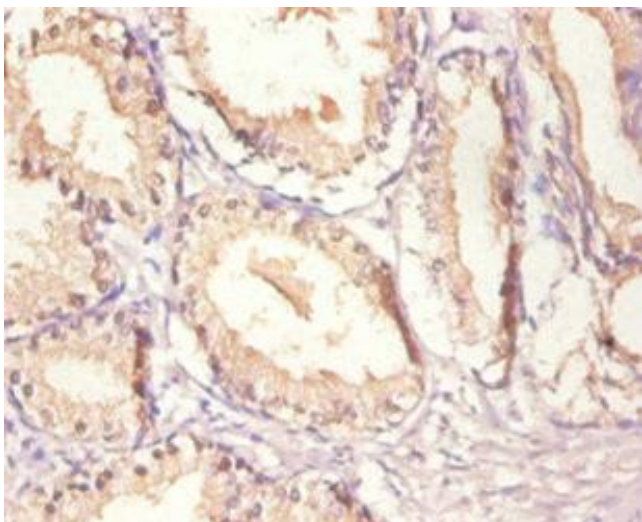
### Application

ELISA, IHC, IF; Recommended dilution: IHC:1:20-1:200, IF:1:500-1:1000

---



Immunofluorescence staining of HeLa cells with EGFR Antibody at 1:500, counter-stained with DAPI. The cells were fixed in 4% formaldehyde, permeabilized using 0.2% Triton X-100 and blocked in 10% normal Goat Serum. The cells were then incubated with the antibody overnight at 4°C. The secondary antibody was Alexa Fluor 488-conjugated AffiniPure Goat Anti-Rabbit IgG(H+L).



Immunohistochemistry of paraffin-embedded human prostate tissue using EGFR Antibody at dilution of 1:100