

## RNASE2 Polyclonal Antibody

(Catalog # A52888)

### Background

This is a non-secretory ribonuclease. It is a pyrimidine specific nuclease with a slight preference for U. Cytotoxin and helminthotoxin. Selectively chemotactic for dendritic cells. Possesses a wide variety of biological activities.

### Description

RNASE2 Polyclonal Antibody. Unconjugated. Raised in: Rabbit.

### Formulation

Liquid. 0.03% Proclin 300, 50% Glycerol, 0.01M PBS, PH 7.4.

### Specificity

Human

### Isotype

IgG

### Uniprot ID

P10153

### Purification

>95%, Protein G purified

### Immunogen

Recombinant Human Non-secretory ribonuclease protein (28-161AA)

### Storage

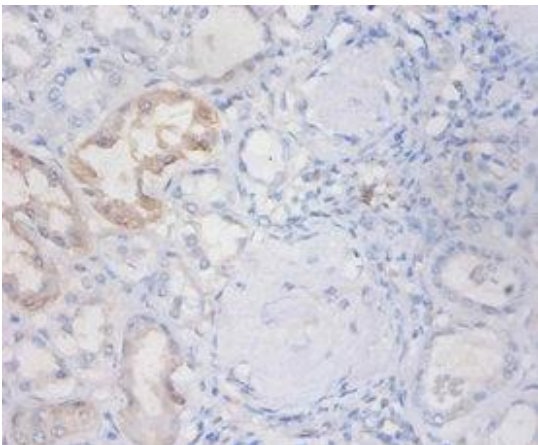
Shipped at 4°C. Upon delivery aliquot and store at -20°C (short-term) or -80°C (long-term). Avoid repeated freeze.

### Alternative Names

Eosinophil-derived neurotoxin, RNase Upl-2, Ribonuclease 2, Ribonuclease US, RNASE2, EDN, RNS2

### Application

ELISA, IHC; Recommended dilution: IHC:1:20-1:200



Immunohistochemistry of paraffin-embedded human kidney at dilution 1:100