

FGF21 Polyclonal Antibody

(Catalog # A52640)

Background

Stimulates glucose uptake in differentiated adipocytes via the induction of glucose transporter SLC2A1/GLUT1 expression (but not SLC2A4/GLUT4 expression). Activity requires the presence of KLB.

Description

FGF21 Polyclonal Antibody. Unconjugated. Raised in: Rabbit.

Formulation

Liquid. 0.03% Proclin 300, 50% Glycerol, 0.01M PBS, PH 7.4.

Specificity

Human

Isotype

IgG

Uniprot ID

Q9NSA1

Purification

>95%, Protein G purified

Immunogen

Recombinant Human Fibroblast growth factor 21 protein (29-209AA)

Storage

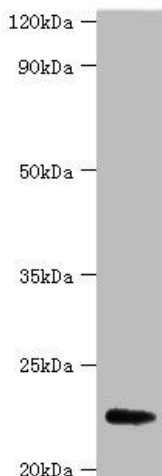
Shipped at 4°C. Upon delivery aliquot and store at -20°C (short-term) or -80°C (long-term). Avoid repeated freeze.

Alternative Names

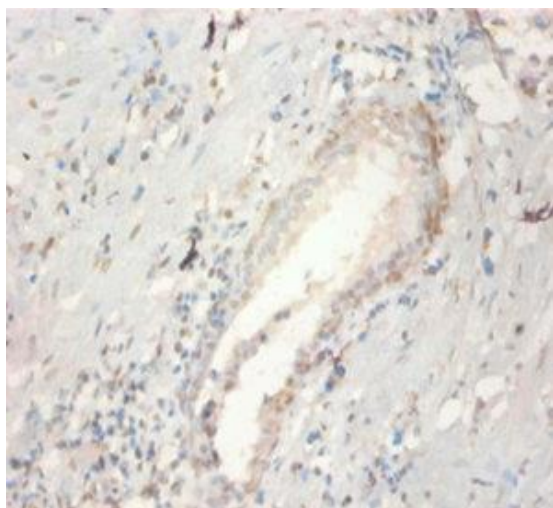
UNQ3115/PRO10196, FGF21, FGF-21

Application

ELISA, WB, IHC; Recommended dilution: WB:1:1000-1:5000, IHC:1:20-1:200



All lanes: FGF21 Polyclonal Antibody at 2ug/ml+A549 whole cell lysate
Secondary
Goat polyclonal to Rabbit IgG at 1/15000 dilution
Predicted band size:
23 kDa Observed band size: 23 k



Immunohistochemistry of paraffin-embedded human prostate at dilution of 1:100