

GAPDH Polyclonal Antibody

(Catalog # A52409)

Background

Glycerol 3 Phosphate Dehydrogenase is a homodimer and belongs to the NAD dependent Glycerol 3 Phosphate Dehydrogenase family.

Description

GAPDH Polyclonal Antibody. Unconjugated. Raised in: Rabbit.

Formulation

0.03% Proclin 300. 50% Glycerol, 0.01M PBS, pH 7.4.

Specificity

Human

Isotype

IgG

Uniprot ID

P04406

Purification

Protein G purified

Immunogen

Recombinant Human Glyceraldehyde-3-phosphate dehydrogenase protein (3-335AA)

Storage

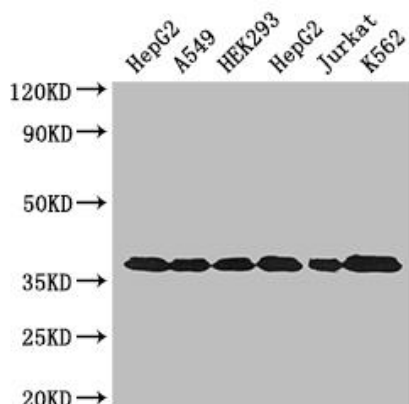
Shipped at 4°C. Upon delivery aliquot and store at -20°C (short-term) or -80°C (long-term). Avoid repeated freeze.

Alternative Names

GAPDH, GAPD, CDABP0047, OK/SW-cl.12, Peptidyl-cysteine S-nitrosylase GAPDH

Application

ELISA, WB, IHC, IF; Recommended dilution: WB:1:500-1:5000, IHC:1:20-1:200, IF:1:50-1:200



Western Blot

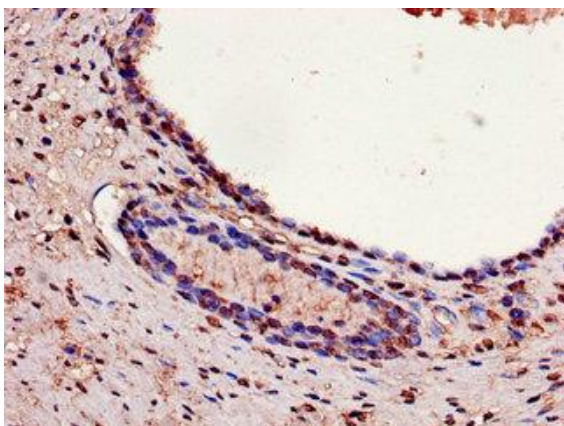
Positive WB detected in: Hela whole cell lysate, A549 whole cell lysate, HEK293 whole cell lysate, HepG2 whole cell lysate, Jurkat whole cell lysate, K562 whole cell lysate

All lanes: GAPDH Polyclonal Antibody at 3ug/ml
Secondary

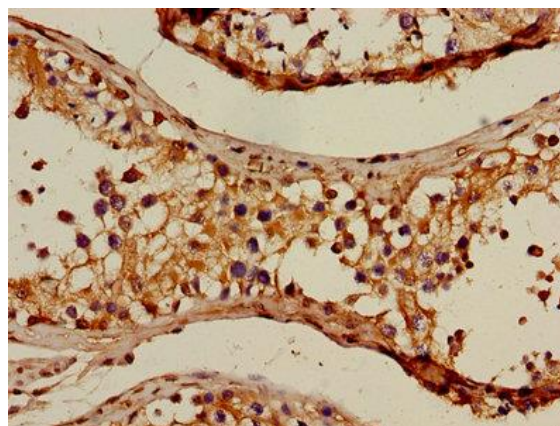
Goat polyclonal to rabbit IgG at 1/50000 dilution

Predicted band size: 37, 32 kDa

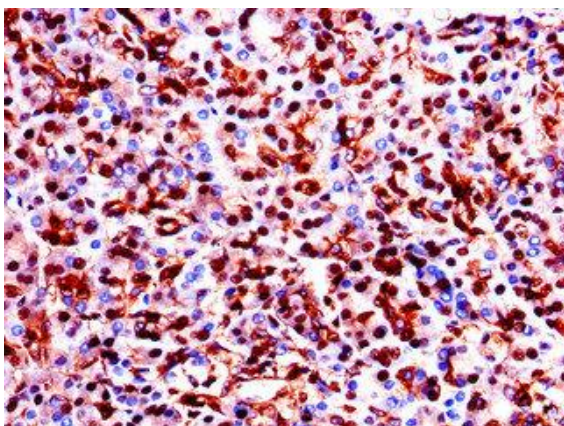
Observed band size: 37 kDa



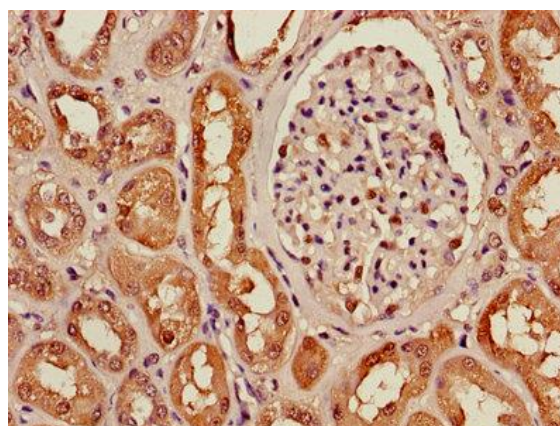
Immunohistochemistry of paraffin-embedded human prostate cancer at dilution of 1:100



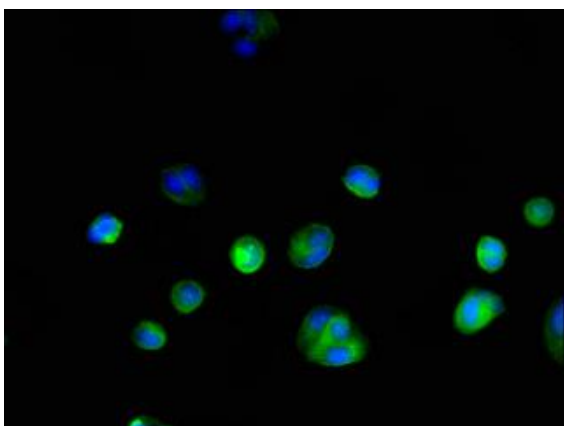
Immunohistochemistry of paraffin-embedded human testis tissue at dilution of 1:100



Immunohistochemistry of paraffin-embedded human pancreatic tissue at dilution of 1:100



Immunohistochemistry of paraffin-embedded human kidney tissue at dilution of 1:100



Immunofluorescent analysis of MCF-7 cells at a dilution of 1:100 and Alexa Fluor 488-conjugated AffiniPure Goat Anti-Rabbit IgG(H+L)